



Universitas  
Alma Ata

The Globe Inspiring University

## Academic Guideline

Faculty of Tarbiyah and Teacher Training  
Alma Ata University  
2023



## FOREWORD

*Assalamualaikum Wr. Wb.*

*Thank God* , everything praise for God God universe nature, top His grace and blessings Academic Guide Faculty Knowledge UAA's Tarbiyah and Teacher Training (FITK). can be arranged .

Faculty Knowledge Tarbiyah and Teacher Training (FITK) is change from Faculty Teacher Training and Education (FKIP) and change Name since 09 November 2021. Faculty Knowledge Tarbiyah and Teacher Training (FITK) currently This has four study programs consisting from Islamic Religious Education ( PAI), Madrasah Ibtidaiyah Teacher Education (PGMI), Mathematics Education (PMAT) and Primary School Teacher Education (PGSD).

On behalf of Our FITK Dean is worthy thank you very much at a time give high appreciation to all stakeholders who have followed as well as in giving contribution for arrangement guide FITK Academic Year academic 2021/2022. Hopefully the sincerity and contribution that has been made will become charity clever and useful for Alma Ata University FITK progress.

*Wassalamu'alaikum Wr. Wb.*



Dean Faculty Knowledge Tarbiyah and Teacher Training  
Alma Atta University

Dr. Ahmad Salim, S.Pd. , M.Pd.

## CHAPTER 1

### ALMA ATA UNIVERSITY PROFILE

#### A. INTRODUCTION

Alma Ata University (UAA) Yogyakarta was officially founded and organized by the Alma Ata Foundation on December 21 2015 in accordance with the Minister's Decree Research, Technology and Higher Education Number 155/KPT/I/2015. UAA is change form from The Alma Ata College of Health Sciences (UNIVERSITY) was founded since dated June 29 2006 in accordance with the Decree of the Minister of National Education of the Republic of Indonesia No: 108/D/O/2006, and the Alma Ata College of Religious Sciences (STIA). Alma Ata University currently This has its own four (4) faculties consisting of from ; (1) Faculty of Health Sciences (FIKES), (2) Faculty of Economics and Business (FEB), (3) Faculty of Knowledge Tarbiyah and Teacher Training (FITK), and (5) Faculty of Computers and Engineering (FKT).

In accordance with mark listed in As the name suggests, Alma Ata's birth was attended by intellectuals Muslims and Islamic boarding school clerics present (ATA) in Indonesia For continue the message of Rasulullah SAW with print resource professional, upstanding human being high values scientific and advanced scientific rules as the basis of every charity his actions (*ALIMA*), have noble morals, and with hold on firm to values Islamic teachings serve For the interest of people . Alma Ata was born as responses of scholars Muslims and scholars in the environment Cottage Ali Masduqi Foundation Islamic Boarding School and Pondok Ali Maksum Foundation Islamic Boarding School to developments over time, trends change civilization, life patterns and behavior of this mature man, and is part of reflection not quite enough religious moral responsibility For prove that " *Islam is always suitable anytime and anywhere* " that " *Islam sholihun fi kulli Zaman wa Eat* " .

#### B. VISION

In 2040 UAA will become a superior, independent, empowered university with global competitiveness, contributing to development well-being nations and world civilizations are based on Islamic values and Indonesian nationality.

#### C. MISSION

1. Organize activities quality education, research and community service (Tri Dharma of Higher Education). tall and powerful global competitiveness, based on Islamic values and Indonesian nationality, as well as contributing to the development of nations and world civilizations.

2. Develop a system and atmosphere conducive academic for realizing culture quality ( *quality culture* ) in organizing the Tri Dharma of Higher Education through governance development college good university governance ( *good university governance* ). gradual and continuous.

#### D. OBJECTIVE

1. Become a superior university with Islamic character, and oriented to people's interests.
2. Become an independent university and have good governance.
3. Produce graduates who are professional, have a global vision, and have good morals, glorious.

#### E. TARGET:

**For Goal 1: "To become a university of excellence, with Islamic character, and oriented to the interests of people", the target is:**

- 1) Increasing quantity and quality of students.
- 2) Increasing quantity and quality Source Power Man
- 3) Increasing quality system learning and integration *Rahmatan* Islamic religious values *lil- alamin* in curriculum education.
- 4) Increasing number of study programs and activities tridharma college developed and implemented For fulfilling the needs and interests of the public.

**For Goal 2: "Become a University that is independent and has good governance", the target is:**

1. Increasing achievement effort provision facilities and infrastructure adequate academics .
2. Increasing amount of funds and sources of funds for development activity academic, means infrastructure and human resources.
3. Increasing achievement stages For realization of *good university governance* in Alma Ata University institution management system.
4. Increasing achievement stages development atmosphere conducive academic .

**For goal3: "Produce graduates who are professional, have a global vision, and have good, noble morals", the target is:**

1. Increasing graduates who pass the national or international competency exam.
2. Increasing Power absorb graduates by the job market national or international.
3. Increasing behaved graduates professional and morally glorious .

## F. ALMA ATA UNIVERSITY CORE VALUES

Values Alma Ata's main must become an integral part in the life of the academic community summarized in the words: "*We are Healthy (We are All Healthy)*".

*W : Worldwide*  
*E : Envisioned*

*A : Adequate*  
*R : Recognition*  
*E : Enlightened*

*H : Heart*  
*E : Earning*  
*A : And*  
*L : Learning*  
*T : Today*  
*H : Whole*  
*Y : Year*

*"Everyone should be worldwide-envisioned to achieve adequate recognition by using an enlightened heart in the earning and learning process today and for the whole year"*

Alma Ata University always creates a conducive atmosphere For creation of universal (global) vision for every member of the Alma Ata community so that it is so get adequate world recognition with put forward clear heart in every movement / effort For look for living or carrying out the learning process today and for ever.

**CHAPTER II**  
**PROFILE OF THE FACULTY OF TARBIYAH AND TEACHING TRAINING**  
**ALMA ATA UNIVERSITY**

**A. INTRODUCTION**

Faculty Knowledge Tarbiyah and Teacher Training (FITK) is change from Faculty Teacher Training and Education (FKIP) and change Name since 09 November 2021. Faculty Knowledge Tarbiyah and Teacher Training (FITK) currently This has four study programs consisting from Islamic Religious Education ( PAI), Madrasah Ibtidaiyah Teacher Education (PGMI), Mathematics Education (PMAT) and Primary School Teacher Education (PGSD).

**B. VISION**

In 2040 FITK becomes superior faculty in the field of innovation education and learning, independent, empowered global competitiveness, contributing to development well-being nations and world civilizations are based on Islamic values and Indonesian nationality.

**C. MISSION**

1. Organize activity education, research and service to society (Tridharma Higher Education) at high quality FITK, contribute to development well-being nations and world civilizations are based on Islamic values and Indonesian nationality.
2. Develop a system and atmosphere conducive to academics at FITK for realizing culture quality ( *quality culture* ) in organizing the Tri Dharma of Higher Education through governance development college good university governance (good *university governance* ). gradual and continuous.

**D. OBJECTIVE**

**Goal 1:**

- 1.1. Produce graduates who excel in the field Educational Innovation, competent, professional, empowered global competitiveness, morals noble, as well as uphold high values Islam and Indonesian nationality
- 1.2. Produce scientific work reputable national or international Good in a way direct or No direct can increase the well-being of Indonesian society and meaningful for development world civilization.

**Goal 2:**

- 2.1. Build an atmosphere conducive academic for its implementation activity tridharma college tall
- 2.2. Implementation of governance system faculty based principles of *good university governance*

**E. TARGET:**

**For goal 1.1: "Produce graduates who excel in the field Educational Innovation, competent, professional, empowered global competitiveness, noble morals, as well as uphold high values of Islam and Indonesian nationality", the target is**

- S.1.1.1 Enhancement of quantity and quality of students;
- S.1.1.2 Enhancement quantity and quality Source Power Educators and Education;
- S.1.1.3 Enhancement quality of learning system;
- S.1.1.4 Integration *Rahmatan lil-alamin* Islamic religious values , leadership, cooperation across professions, and nationality values in curriculum renewable education;
- S.1.1.5 Enhancement quantity and quality of independent study programs;
- S.1.1.6 Enhancement Power absorb graduates by the job market national or international;
- S.1.1.7 Enhancement behaved graduates professional, and moral glorious.

**For goal 1.2: "Produce reputable scientific work nationally nor internationally and globally direct nor no direct can increase the well-being of Indonesian society and meaningful for development world civilization", the target is:**

- S.1.2.1 Enhancement quantity and quality of Research and Service to the Community (P2M);
- S.1.2.2 Enhancement of the amount of P2M financed by the party outside;
- S.1.2.3 Enhancement quantity and quality P2M collaboration with government or private institutions as well as the industrial world;
- S.1.2.4 Enhancement quantity and quality of scientific publications;
- S.1.2.5 Enhancement quantity and quality rights intellectual property;

**For goal 2.1: " Build an atmosphere conducive academic for implementation activity tridharma college high", the target is:**

- S.2.1.1 Enhancement satisfaction with academic service;
- S.2.1.2 Enhancement amount scientific forum activities initiated by the community members academics;

**For goal 2.2: "Implementation Governance system faculty based on principles of *good university governance* "**

S.2.2.1 Enhancement accreditation of study programs & institutions ;

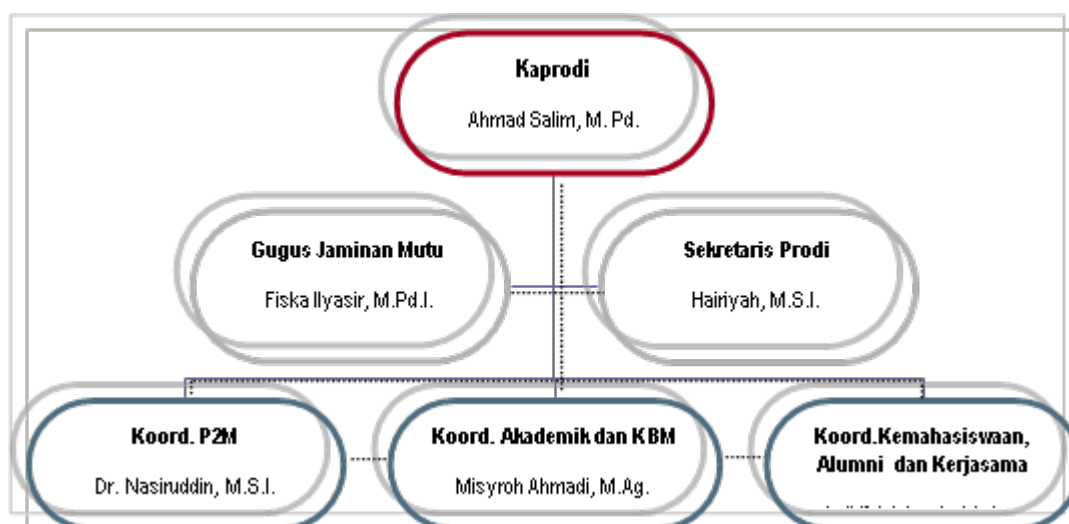
S.2.2.2 Enhancement achievement stages For realization of *good university governance* in the management system of Faculty Teacher Training and Education (FITK) Alma Ata University.



**CHAPTER III**  
**FACULTY OF TARBIYAH AND TEACHING SCIENCES STUDY PROGRAM**

**A. ISLAMIC RELIGIOUS EDUCATION (PAI) STUDY PROGRAM**

**1. Structure Study Program Organization**



**2. PAI Study Program Profile**

FKIP Alma Ata PAI Undergraduate Study Program was established since dated May 28 2007 based on the Director's Decree General of Islamic Education Ministry of Religion of the Republic of Indonesia No: Dj.I /220.D/2007 at the College of Science Tarbiyah (STIT ) Alma Ata Yogyakarta. Then, on September 4 2008, the College of Science Tarbiyah (STIT) Alma Ata Yogyakarta is changing Name to Alma Ata Yogyakarta College of Religious Sciences (STIA), based decision Director General of Islamic Education Ministry of Religion of the Republic of Indonesia No: DJ.I /314/2008. The PAI study program has collaborated with a number of schools and campuses in Yogyakarta, both state and private. Besides The FAI Study Program at Alma Ata University is also collaborating with the *University of Ez-Zitoun* a Tunisia Africa as an effort to expand network work and improve student competence as well as strengthen institutions.

Ministry of Religion via Director of PAI Schools General Ministry of Religion Amin Haedari discloses that There is a shortage of PAI teachers in Indonesia currently This reach about 198,000, which is divided still an elementary school PAI teacher less than 3,494 people, PAI teachers for junior high schools less than 2,218 people. Meanwhile, for

high school and vocational school levels, there is a relative shortage of PAI teachers. Enough Lots with amounts ranging from 3,598 people and 2,378 people. Amount the Not yet added with the needs of PAI teachers at madrasas from base to intermediate level either country or private . More carry on he said that lack of the predicted the more increase along opened it new school and the number of teachers who will be entering retirement in 2018 will come .

Reality above the further strengthens the importance of the PAI teacher profession as a noble profession which is still very broad in its work opportunities, and consequently increasingly flooded it dropping fans choice of major This. So the presence of the Alma Ata Yogyakarta PAI Study Program as study program Islamic education is necessary get serious attention for all parties, especially candidate students who want to become professional educators.

### **3. Vis i**

In 2040, the PAI Study Program will become a superior Study Program in the field of development system Islamic-based education and learning quality, independent, empowered global competitiveness and based on the values of Indonesian Islam and nationality and contribute to the development of well-being nations and world civilizations.

### **4. Missions**

In accordance with The mission of the Alma Ata University FAI, then The mission of the Islamic Religious Education Study Program is:

- a. Realize Islamic Religious Education, research and service activities to society (Tridharma quality universities high, Islamic, and oriented to interest people.
- b. Develop system and atmosphere conducive academic for implementation of Tridharma College via development good Study Program management in a gradual and continuous way To support the realization of *good university governance*.

### **5. Objective**

Refer to objective institution, then the Islamic Religious Education Study Program has objectives as follows:

- a. To become a superior PAI Study Program with Islamic character, and interest-oriented people.
- b. Become a PAI Study Program that is independent and has good governance.

- c. Produce graduates of PAI teachers are professional and superior in development based education system quality, global vision, and glorious morals.

## 6. PAI Study Program graduate profile

- a. Educator  
Study Program Graduates Bachelor of Islamic Religious Education at Alma Ata University becomes a *muttaqin* Islamic Religious Education teacher at the elementary (SD/MI, SMP/MTs) and secondary (SMA/MA/SMK) education levels.
- b. Researcher  
Graduates of the Islamic Religious Education Study Program at Alma Ata University are capable of becoming researchers who *muttaqin* below guidance mentor .
- c. Education Consultant  
Graduates of the Islamic Religious Education Study Program at Alma Ata University are capable of becoming consultants *for muttaqin* Islamic education.
- d. Manager  
Graduates of the Islamic Religious Education Study Program are capable of becoming managers of absolute education institutions .

## 7. PAI Study Program Curriculum Design

Islamic Religious Education study program curriculum consists of from three groups eye college, that is eyes studying University level, eyes studying Faculty level, and eyes studying study program level. There are 154 course credits college consisting of 134 points studying mandatory and 20 points studying choice , students must take 144 credits to graduate from the PAI study program. The number of credits is 134 points studying mandatory and 10 points studying optional, with details of 16 credits for eye University courses, 45 credits for eye studying Faculty, and 83 credits for eye study program lectures, which were carried out normally in 8 semesters.

Table 1. Grouping of Islamic Religious Study Program Courses According to Position and Code.

Eye Position Studying	Code	Number of credits
1. Subject University level	UAA	16
2. Subject Faculty level	FKIP	45
3. Subject study program level		
a. Subject must	PIE	73
b. Subject choice	PIE	20
Amount		146

Table 2. Islamic Religious Studies Program Curriculum Design

No.	Code	Course Name	Achievements learning			
			Attitud e	Ket. Genera l	Ket. Special	Penge t.
1	UAA004	Indonesian	√	√	√	√
2	FKIP016	ISBD	√	√	√	
3	UAA005	Citizenship	√	√	√	
4	FKIP019	Introduction to Islamic Studies	√	√	√	
5	FKIP017	Arabic I	√			√
6	UAA007	English I		√		√
7	PAI001	Fiqh	√			
8	UAA006	Pancasila	√		√	
9	PAI002	Kalam Science	√	√	√	
10	UAA001	SAI-I	√	√	√	√
11	FKIP018	Arabic II	√	√		√

12	FKIP01 2	English II	√	√	√	√
13	FKIP02 0	Philosophical Knowledge	√	√	√	
14	FKIP00 1	Education Science	√	√	√	√
15	FKIP00 3	Educational Psychology	√	√	√	√
16	PAI 003	Ushul Fiqh	√	√		√
17	PAI004	Al-Qur'an	√	√	√	
18	PAI005	Al Hadith	√	√		
19	PAI 006	History of Islamic Civilization	√	√		
20	UAA00 2	SAI-II	√	√		
21	FKIP01 4	Philosophy of Education	√	√	√	√
22	PAI007	Morals of Sufism	√	√	√	√
23	PAI008	Psychology Development	√	√	√	√
24	UAA00 8	Entrepreneurship	√	√		√
25	PAI009	History of Indonesian Islamic Education	√	√		
26	FKIP00 2	Education Management	√	√	√	√
27	PAI010	<i>Masailul Fiqhiyah</i>	√	√	√	√
28	PAI011	<i>Reading Text</i>	√	√		
29	PAI012	<i>Qiroatul Pole</i>	√	√		
30	UAA00 3	SAI-III	√	√		
31	FKIP00 6	Education Statistics		√	√	√
32	PAI013	Planning PAI system		√	√	√
33	PAI014	Personality Development	√	√	√	√
34	PAI015	Learning strategies	√	√	√	√
35	PAI016	Administration School / Madrasah		√	√	√
36	FKIP01 5	Educational Leadership	√	√	√	√
37	FKIP01 3	Guidance Counselling	√	√	√	√
38	FKIP01 2	Psychology of Religion	√	√	√	√
39	PAI017	Knowledge Communication *	√	√	√	
40	PAI018	Management Library school / madrasa*		√	√	√
41	FKIP00 7	Educational Research Methodology	√	√	√	√

42	PAI019	Social and Educational Studies	√	√	√	√
43	PAI020	PAI Learning Method	√	√	√	√
44	PAI021	PAI Media Development		√	√	√
45	PAI022	Learning Al-Qur'an Hadith in Madrasah	√	√	√	√
46	PAI023	learning in Madrasah	√	√	√	√
47	PAI024	Learning in Elementary Schools	√		√	√
48	PAI025	PAI Based Environment (Mulok)	√	√	√	√
49	PAI026	Management Finance of Islamic Educational Institutions*		√		√
50	PAI027	<i>Total Quality Management</i> *	√	√	√	√
51	PAI028	Learning at School Medium	√	√	√	√
52	PAI029	Writing Thesis	√	√	√	√
53	PAI030	Management Based School	√	√	√	√
54	PAI031	Learning Fiqh in Madrasah	√	√	√	√
55	PAI032	Learning Creed Morals in Madrasah	√	√	√	√
56	FKIP004	Development Curriculum	√	√	√	√
57	PAI033	Innovation PAI Curriculum in Madrasah/Schools	√	√	√	√
58	PAI034	Development System PAI Evaluation		√	√	√
59	FKIP005	Professional Teachers	√	√	√	√
60	FKIP008	<i>Microteaching</i>	√	√	√	√
61	PAI035	Sociology of Education*		√		√
62	PAI036	Anthropology *		√		
63	FKIP009	PPL	√	√	√	√
64	FKIP010	KKN	√	√	√	√
65	PAI037	policy *	√	√	√	√
66	PAI038	Problems and Issues Contemporary Education*	√	√	√	√
67	PAI039	Comparisons *	√	√		√
68	PAI040	Multicultural Education *	√	√		√
69	FKIP011	Thesis	√	√	√	√

## 8. Distribution of Courses Per Semester

SEMESTER 1				
NO.	SMT	CODE	NAME MK	SKS
1	I	UAA004	Indonesian	2
2	I	FKIP016	ISBD	2
3	I	UAA005	Citizenship	2
4	I	FKIP019	Introduction to Islamic Studies	2

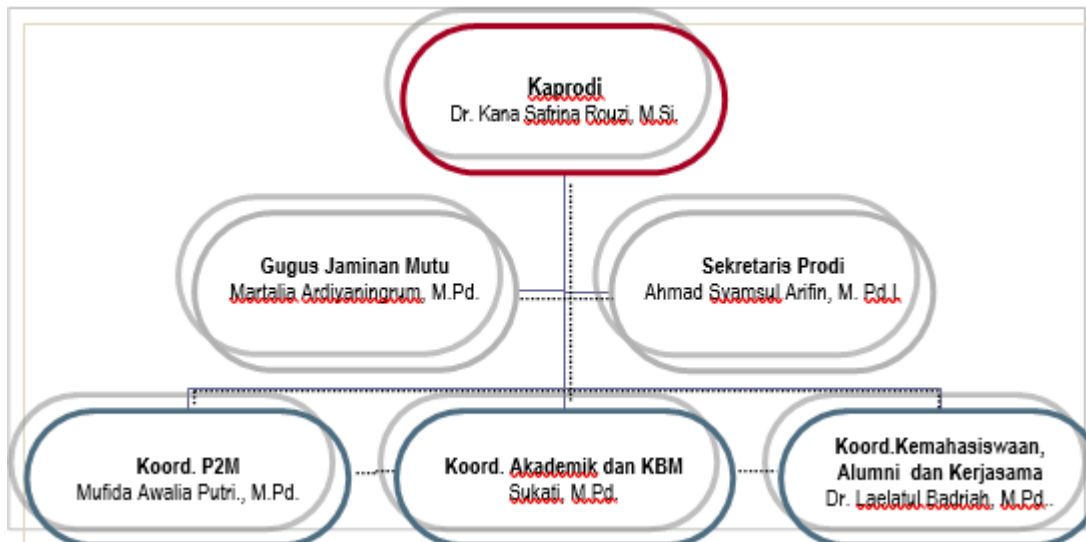
5	I	FKIP017	Arabic I	2
6	I	UAA007	English I	2
7	I	PAI 001	Fiqh	2
8	I	UAA006	Pancasila	2
9	I	PAI 002	Kalam Science	2
10	I	UAA001	SAI-I	2
Total				20
SEMESTER 2				
No	SMT	CODE	NAME MK	SKS
1	II	FKIP018	Arabic II	2
2	II	FKIP012	English II	2
3	II	FKIP020	Philosophical Knowledge	2
4	II	FKIP001	Education Science	2
5	II	FKIP003	Educational Psychology	2
6	II	PAI 003	Ushul Fiqh	2
7	II	PAI004	Al-Qur'an	2
8	II	PAI005	Al Hadith	2
9	II	PAI 006	History of Islamic Civilization	2
10	II	UAA002	SAI-II	2
Total				20
3RD SEMESTER				
No	SMT	CODE	NAME MK	SKS
1	III	FKIP014	Philosophy of Education	2
2	III	PAI007	Morals of Sufism	2
3	III	PAI008	Psychology Development	2
4	III	UAA008	Entrepreneurship	2
5	III	PAI009	History of Indonesian Islamic Education	2
6	III	FKIP002	Education Management	2
7	III	PAI010	Masailul Fiqhiyah	2
8	III	PAI011	Reading Text	2
9	III	PAI012	Qiroatul pole	2
10	III	UAA003	SAI-III	2
Total				20
SEMESTER 4				
NO	SMT	CODE	NAME MK	SKS
1	IV	FKIP006	Education Statistics	3
2	IV	PAI013	Planning PAI system	4
3	IV	PAI014	Personality Development	2
4	IV	PAI015	Learning strategies	2
5	IV	PAI016	Administration School / Madrasah	2
6	IV	FKIP015	Educational Leadership	2
7	IV	FKIP013	Guidance Counselling	2
8	IV	FKIP012	Psychology of Religion	2
9	IV	PAI017	Knowledge Communication *	2
10	IV	PAI018	Management Library school / madrasa*	2

Total				23
5TH SEMESTER				
NO	SMT	CODE	NAME MK	SKS
1	V	FKIP007	Educational Research Methodology	2
2	V	PAI019	Social and Educational Studies	2
3	V	PAI020	PAI Learning Method	4
4	V	PAI021	PAI Media Development	4
5	V	PAI022	Learning Al-Qur'an Hadith in Madrasah	2
6	V	PAI023	learning in Madrasah	2
7	V	PAI024	Learning in Elementary Schools	2
8	V	PAI025	PAI Based Environment (Mulok)	2
9	V	PAI026	Management Finance of Islamic Educational Institutions*	2
10	V	PAI027	Total Quality Management*	2
Total				24
6TH SEMESTER				
NO	SMT	CODE	NAME MK	SKS
1	VI	PAI028	Learning at School Medium	2
2	VI	PAI029	Writing Thesis	1
3	VI	PAI030	Management Based School	2
4	VI	PAI031	Learning Fiqh in Madrasah	2
5	VI	PAI032	Learning Creed Morals in Madrasah	2
6	VI	FKIP004	Development Curriculum	2
7	VI	PAI033	Innovation PAI Curriculum in Madrasah/Schools	2
8	VI	PAI034	Development System PAI Evaluation	4
9	VI	FKIP005	Professional Teachers	2
10	VI	FKIP008	Microteaching	2
11	VI	PAI035	Sociology of Education*	2
12	VI	PAI036	Anthropology *	2
Total				25
7TH SEMESTER				
NO	SMT	CODE	NAME MK	SKS
1	VII	FKIP009	PPL	4
2	VII	FKIP010	KKN	4
3	VII	PAI037	policies *	2
4	VII	PAI038	Problems and Issues Contemporary Education*	2
5	VII	PAI039	Comparisons *	2
6	VII	PAI040	Multicultural Education *	2
Total				16
SEMESTER 8				
NO	SMT	CODE	NAME MK	SKS
1	VIII	FKIP011	Thesis	6
Total				6



## B. MADRASAH IBTIDAIYAH TEACHER EDUCATION STUDY PROGRAM (PGMI)

### 1. Structure Study Program Organization



### 2. PGMI Study Program Profile

Alma Ata University Yogyakarta is one of the *pioneer* organizers of the Madrasah Ibtidaiyah Teacher Education Study Program (PGMI) in Yogyakarta. The presence of the PGMI Alma Ata Study Program is one of them forms an endeavor in the frame of joining in as well as answering the challenge of improving the quality of education at the base level in Indonesia. Based on report *Education For All (EFA) Global Monitoring Report 2011: The Hidden Crisis, Armed Conflict and Education* issued by UNESCO, Education development index or Indonesia's *education development index* (EDI) is of 0.934. This figure places Indonesia in 69th position out of 127 countries in the world.

One of the reasons for low quality education The basis in Indonesia is the problem of number and quality of teachers. Quality and quantity of educational power in Indonesia is still very low. From 2010 Ministry of National Education data access education in Indonesia still needs to get attention. There is more than 54% of teachers have standard necessary qualifications For quick improvement .

PGMI Alma Ata Study Program provides at a time facilitate graduates to 1) be able to become competent and professional educators, with a global vision based on mastery and development science, research, science and technology, entrepreneurship global vision with based on mastery and development science, research, science and *technology*, entrepreneurship and *morals*; 2) capable of becoming a person of character and personality Islamic, soulful nationalist and love homeland and nation, sympathetic, tolerant and dynamic capable of becoming a figure role model and role model ( *character builder* ) for the participants educate in speaking, behaving and behaving in context society, nation and state; 3) capable of becoming superior educator in mastery and development knowledge knowledge in accordance with expertise in the field as well as capable of doing innovation learning and education based base to develop science, research and renewable science and technology ( *researchers* ) as well as hold on firm to Islamic values, national and spiritual entrepreneurship. ( *Islamic Edutechpreneur* ).

Excellence from the PGMI Study Program at Alma Ata University, Yogyakarta, namely as follows:

- Advantages 1

Alma Ata University Madrasah Ibtidaiyah Teacher Education Study Program (PGMI) is one of the *pioneers of the Madrasah Ibtidaiyah Teacher Education Study Program (PGMI)* in Yogyakarta

- Advantage 2

PGMI Alma Ata Study Program currently This has been accredited by the National Accreditation Board for Higher Education based on BAN-PT Decree No. 2102/SK/BAN-PT/Ak-PPJ/S/IV/2020, states that the Madrasah Ibtidaiyah Teacher Education Study Program , in the Undergraduate Program has been accredited with grade "B". In 2025, the PGMI Alma Ata Study Program will return to carry out the reaccreditation process.

- Advantage 3

The learning model developed in *the* PGMI Study Program is a more student-centered learning model emphasizes individual potential, interests, needs and abilities. Through this SCL model students are encouraged to " *learn how to learn* "

and be encouraged to become active learners (*active learners*) in discussion groups or Study independently through guidance and stimulation from lecturers, so will bring up a creative, independent, disciplined, critical thinking attitude, capable in communicating and collaborating with Good in *A team work*, understanding concepts, have good technical skills, and have global insight.

### 3. Vision

"In 2040, the PGMI Alma Ata Study Program will become a Study Program front in producing prospective MI teachers who excel in the field design needs - oriented learning basic education, independent, empowered global competitiveness, contribute to development well-being nations and world civilizations are based on Islamic values and Indonesian nationality".

### 4. Missions

1. Organize activity education, research and service to society (Tridharma Higher Education) in the field design needs - oriented learning education foundation in quality PGMI study programs high, contribute to development well-being nations and world civilizations are based on Islamic values and Indonesian nationality.
2. Develop a system and atmosphere conducive academic for realizing culture quality (*quality culture*) in organizing the Tri Dharma of Higher Education through governance development college good university governance (*good university governance*). gradual and continuous.

### 5. Objective

1. Produce excellent graduates in the field design needs - oriented learning basic education, competent, professional, empowered global competitiveness, morals noble, as well as uphold high values Indonesian nationality.
2. Produce work scientific field design needs - oriented learning education base reputable national nor internationally and globally direct nor No direct can increase well-being Indonesian society and meaningful for development world civilization.

2. 1. Build a conducive academic atmosphere for holding activity Tridharma College tall.
2. 1. Develop a study program governance system based on the principles of *good university governance*.

## 6. Profile of Graduates of the PGMI Study Program

Graduate of Madrasah Ibtidaiyah Teacher Education Study Program expected can role in society as:

- a. Class Teacher / Educator at MI Basic Education level ( *Educator* ).

Graduates of the Alma Ata University Madrasah Ibtidaiyah Teacher Education Undergraduate Study Program are capable of giving education in a professional way both at Elementary school level, fine School basic (SD) and Madrasah Ibtidaiyah (MI) as well as own outlook knowledge, skills and attitudes positive as a expert education *muttaqin* basis .

- b. *Character Builder*

Graduates of the Alma Ata Madrasah Ibtidaiyah Teacher Education Undergraduate Study Program are capable of becoming a person of character and personality Islamic, soulful nationalist and love homeland and nation, sympathetic, tolerant and dynamic as well as capable of becoming a figure role model and role model ( *character builder* ) for the participants students and citizens school in speaking, thinking, behaving and behaving in the context of society, nation and state.

- c. *Researcher*

Graduates of the Alma Ata Madrasah Ibtidaiyah Teacher Education Undergraduate Study Program become capable *muttaqin* researchers plan , implement, develop and utilize research results in the field education base as part For increase quality education base through innovation and development teaching materials, strategies, media, and evaluation learning based development science, research and renewable science and technology ( *researchers* ) both in the field education base.

d. *Islamic Edu-tech-preneur*

Graduates of the Alma Ata Madrasah Ibtidaiyah Teacher Education Undergraduate Study Program have soul muttaqin entrepreneurship in *the* field development - based education science, research and renewable science and technology ( *researchers* ) in the field education base as well as capable of thinking critically, creatively, innovatively , deep develop work business Good individually or in a collective way in frame realize all over function teaching as part of endeavor For increase quality education

## 7. PGMI Study Program Curriculum Design

Alma Ata University PGMI Study Program Curriculum Design refers to the Framework Indonesian National Qualifications (KKNI), Regulations Minister of Higher Education No. 44 of 2015, and Rector's decision letter no. 088/A/SK/UAA/XI/2016 concerning Achievements Learning . Alma Ata University PGMI Study Program accepts students equivalent to MA/SMA/SMK graduates. Study academic load on PGMI Study Program curriculum 160 credits, consisting of a number of components namely 16 credits University course, 49 credits studying faculties, and eyes study program of 95 credits. Besides that's a burden too studies PGMI study program consists of 28 course credits studying institutional and 132 course credits core lectures. Study load This will be taken in the 8 semester study period.

PGMI Study Program offers 79 points lecture, which consists of more than 140 mandatory studying credits and 20 elective studying credits. PGMI Study Program students are required to complete a minimum of 150 credits. Which consists of 140 course credits studying mandatory and 10 credits studying optional .

**Table 1. Grouping of Islamic Religious Study Program Courses According to Position and Code**

<b>Eye Position Studying</b>	<b>Code</b>	<b>Number of credits</b>
Subject University level	UAA	16
Subject Faculty level	FKIP	49
Subject study program level a. Subject must	PGMI	75

b. Subject choice	PGMI	20
Amount		160

## 8. Distribution of Courses Per Semester

NO	KOD E MK	NAMA MATA KULIAH	JML SK	BEBAN SKS			W/P	LIAISON OFFICER	DOSEN PENGAMPU
				T	P	L			
<b>SEMESTER 01</b>									
1	FAI001	AL-QURAN	2	2	0	0	WAJIB	KHANIF MAKSUM, M.Pd.I	MUINAN
2	FAI002	HADITS	2	2	0	0	WAJIB	KHANIF MAKSUM, M.Pd.I	MISYIROH AKHMADI, M.Ag
3	FAI003	BAHASA ARAB I	2	2	0	0	WAJIB	KHANIF MAKSUM, M.Pd.I	KHANIF MAKSUM, M.Pd.I
4	MI101	FILSAFAT ILMU	2	2	0	0	WAJIB	NIMAH AFIFAH, M.Ag.,	NIMAH AFIFAH, M.Ag.,
5	MI168	TEKNIK PENULISAN KARYA TULIS ILMIAH	1	1	0	0	WAJIB	AHMAD SYAMSUL ARIFIN, M.Pd.I	Dr. KANA SAFRINA ROUZI, M.Si
6	MI213	DASAR-DASAR ICT	3	3	0	0	WAJIB	KHANIF MAKSUM, M.Pd.I	KHANIF MAKSUM, M.Pd.I
7	UAA001	STUDI AGAMA ISLAM I	2	1	1	0	WAJIB	SUKATI, S.Pd.I., M.Pd.	SUKATI, M.Pd., ABDUL SALAM, M.A, LAELATUL BADRIAH, M.Pd.
8	UAA004	BAHASA INDONESIA	2	2	0	0	WAJIB	AHMAD SYAMSUL ARIFIN, M.Pd.I	AHMAD SYAMSUL ARIFIN, M.Pd.I
9	UAA005	PENDIDIKAN KEWARGANEGARAAN	2	2	0	0	WAJIB	NIMAH AFIFAH, M.Ag., M.Pd.I	NIMAH AFIFAH, M.Ag., M.Pd.I
10	UAA006	PANCASILA	2	2	0	0	WAJIB	NIMAH AFIFAH, M.Ag., M.Pd.I	JAUHAR S.Sos, SHI, M.Si, M.Sc
11	UAA007	BAHASA INGGRIS I	2	2	0	0	WAJIB	MARTALIA ARDIYANINGRUM, S.Si., M.Pd.	CAHAYA KUSUMA, M.A, ESTHI NAWANGSASI, S.Pd., MA, TRI UTARI, S.Pd., MA,

No	KODE MK	NAMA MATA KULIAH	SKS	SKS TM	SKS PR	SKS LP	W/P	LIAISON OFFICER	DOSEN PENGAMPU
<b>SEMESTER 02</b>									
1	FAI004	BAHASA ARAB II	2	2	0	0	WAJIB	KHANIF MAKSUM, M.Pd.I	KHANIF MAKSUM, M.Pd.I
2	FAI005	BAHASA INGGRIS II	2	2	0	0	WAJIB	MARTALIA ARDIYANINGRUM, S.Si., M.Pd.	CAHAYA KUSUMA, S.Pd., MA, IKA TRI SUSILOWATI, M.Pd, UMI SALAMAH, S.Pd., M.Hum, ESTHI NAWANGSASI, S.Pd., MA, TRI UTARI, S.Pd., MA, WIWIEK ARIFAH, S.Pd., M.Pd
3	FAI006	USHUL FIQH	2	2	0	0	WAJIB	KHANIF MAKSUM, M.Pd.I	KHANIF MAKSUM, M.Pd.I
4	MI107	KETERAMPILAN DASAR MENGAJAR I	2	1	1	0	WAJIB	LAELATUL BADRIAH, M.Pd.	LAELATUL BADRIAH, M.Pd.
5	MI165	DASAR-DASAR ILMU PENDIDIKAN & PROFESI KEGURUAN	2	2	0	0	WAJIB	SUKATI, S.Pd.I., M.Pd.	SUKATI, S.Pd.I., M.Pd.
6	MI214	MAGANG I	2	0	0	2	WAJIB	LAELATUL BADRIAH, M.Pd.	LAELATUL BADRIAH, M.Pd.
7	MI215	KOMUNIKASI DALAM PENDIDIKAN	2	2	0	0	WAJIB	AHMAD SYAMSUL ARIFIN, M.Pd.I	AHMAD SYAMSUL ARIFIN, M.Pd.I
8	MI216	PSIKOLOGI PENDIDIKAN	2	2	0	0	WAJIB	NIMAH AFIFAH, M.Ag., M.Pd.I	Dr. KANA SAFRINA ROUZI, M.Si / NIMAH AFIFAH, M.Ag., M.Pd.I
9	MI217	MANAJEMEN PENDIDIKAN	2	2	0	0	WAJIB	AHMAD SYAMSUL ARIFIN, M.Pd.I / MUFIDA AWALIA PUTRI, M.Pd.	AHMAD SYAMSUL ARIFIN, M.Pd.I
10	UAA002	STUDI AGAMA ISLAM II	2	2	0	0	WAJIB	LAELATUL BADRIAH, M.Pd.	ABDUL SALAM, MA / LAELATUL BADRIAH, M.Pd.

SEMESTER 03									
22	FAI009	STUDI AGAMA ISLAM III	2	1	1	0	WAJIB	SUKATI, S.Pd.I., M.Pd.	MISYIROH AKHMADI, M.Ag
23	MI159	TELAAH PEMBELAJARAN PAI DI MI	4	4	0	0	WAJIB	KHANIF MAKSUM, M.Pd.I	NI'MAH AFIFAH, M.Ag., M.Pd.I
24	MI162	MATERI KEILMUAN GURU KELAS SD/MI I	6	6	0	0	WAJIB	MUFIDA AWALIA PUTRI, M.Pd.	MARTALIA ARDIYANINGRUM, S.Si., M.Pd. MUFIDA AWALIA PUTRI, M.Pd., SUKATI, S.Pd.I., M.Pd., AHMAD SYAMSUL ARIFIN, M.Pd.I
25	MI169	PSIKOLOGI PERKEMBANGAN PESERTA DIDIK	2	2	0	0	WAJIB	MARTALIA ARDIYANINGRUM, S.Si., M.Pd	Dr. KANA SAFRINA ROUZI, M.Si
26	MI172	MATERI KEILMUAN MULOK GURU KELAS MI/SD	4	3	1	0	WAJIB	SUKATI, S.Pd.I., M.Pd	KHANIF MAKSUM, M.Pd.I, SUKATI, M.Pd., SUGIHARJO, M.Pd,
27	MI173	KETERAMPILAN DASAR MENGAJAR II	2	2	0	0	WAJIB	LAELATUL BADRIAH, S.Pd.I., M.Pd.	LAELATUL BADRIAH, S.Pd.I., M.Pd., MARTALIA ARDIYANINGRUM, S.Si.
28	UAA008	KEWIRAUSAHAAN	2	2	0	0	WAJIB	MUFIDA AWALIA PUTRI, M.Pd	M.Ak.Akt., DEVIA ISFANTIN, M.M

SEMESTER 04									
1	MI160	DESAIN PEMBELAJARAN TEMATIK INTEGRATIF MI	4	4	0	0	WAJIB	LAELATUL BADRIAH, M.Pd.	MUFIDA AWALIA PUTRI, M.Pd / LAELATUL BADRIAH, M.Pd.
2	MI161	PEMBERDAYAAN SUMBER BELAJAR	2	2	0	0	WAJIB	KHANIF MAKSUM, M.Pd.I	KHANIF MAKSUM, M.Pd.I
3	MI163	MATERI KEILMUAN GURU KELAS SD/MI II	6	6	0	0	WAJIB	MARTALIA ARDIYANINGRUM, S.Si., M.Pd.	MARTALIA ARDIYANINGRUM, S.Si., M.Pd. MUFIDA AWALIA PUTRI, M.Pd., SUKATI, S.Pd.I., M.Pd., AHMAD SYAMSUL ARIFIN, M.Pd.I
4	MI219	MAGANG II	2	0	0	2	WAJIB	LAELATUL BADRIAH, M.Pd.	MUFIDA AWALIA PUTRI, M.Pd
5	MI220	PSIKOLOGI BELAJAR	2	2	0	0	WAJIB	NI'MAH AFIFAH, M.Ag., M.Pd.I	Dr. KANA SAFRINA ROUZI, M.Si / NI'MAH AFIFAH, M.Ag., M.Pd.I
6	MI221	INOVASI PEMBELAJARAN BERBASIS IT I	2	1	1	0	WAJIB	KHANIF MAKSUM, M.Pd.I	KHANIF MAKSUM, M.Pd.I., TRI ROCHMADI, M.KOM
7	MI222	PENDIDIKAN KARAKTER	2	2	0	0	WAJIB	NI'MAH AFIFAH, M.Ag., M.Pd.I	Dr. KANA SAFRINA ROUZI, M.Si / NI'MAH AFIFAH, M.Ag., M.Pd.I
8	MI223	STATISTIK PENDIDIKAN	3	3	0	0	WAJIB	MARTALIA ARDIYANINGRUM, S.Si., M.Pd.	MARTALIA ARDIYANINGRUM, S.Si., M.Pd.

SEMESTER 05									
37	MI120	KETERAMPILAN DASAR MENGAJAR DI MI III	2	2	0	0	WAJIB	LAELATUL BADRIAH, S.Pd.I., M.Pd. (3)	LAELATUL BADRIAH, S.Pd.I., M.Pd., MARTALIA ARDIYANINGRUM, S.Si., DR. ANDI WAHYUDI
38	MI154	PENGEMBANGAN DESAIN PEMBELAJARAN TEMATIK INTEGRATIF II	4	4	0	0	WAJIB	LAELATUL BADRIAH, S.Pd.I., M.Pd	LAELATUL BADRIAH, M.Pd., MARTALIA ARDIYANINGRUM, S.Si., M.Pd. MUFIDA AWALIA PUTRI, M.Pd., SUKATI, S.Pd.I., M.Pd., AHMAD SYAMSUL ARIFIN, M.Pd.I
39	MI157	PENGEMBANGAN DESAIN PEMBELAJARAN UNTUK MULO K DI MI I	2	2	0	0	WAJIB	SUKATI, S.Pd.I., M.Pd	SUKATI, S.Pd.I., M.Pd, KHANIF MAKSUM, M.Pd.I
40	MI166	INOVASI & PENGEMBANGAN KURIKULUM DI MI	2	2	0	0	WAJIB	MUFIDA AWALIA PUTRI, M.Pd	MARTALIA ARDIYANINGRUM, S.Si.,
41	MI167	KEBIJAKAN & LANDASAN PENDIDIKAN	2	2	0	0	WAJIB	AHMAD SYAMSUL ARIFIN, M.Pd.I	Dr. KANA SAFRINA ROUZI, M.Si
42	MI170	INOVASI PEMBELAJARAN BERBASIS IT II	2	1	1	0	WAJIB	KHANIF MAKSUM, M.Pd.I	KHANIF MAKSUM, M.Pd.I , TRI ROCHMADI, M.KOM
43	MI174	METODOLOGI PENELITIAN PENDIDIKAN	2	2	0	0	WAJIB	MARTALIA ARDIYANINGRUM, S.Si., M.Pd	MUFIDA AWALIA PUTRI, M.Pd.
44	MI225	MAGANG III	2	0	0	2	WAJIB	LAELATUL BADRIAH, S.Pd.I., M.Pd	LAELATUL BADRIAH, S.Pd.I., M.Pd.
45	MI233	PENGEMBANGAN DESAIN PEMBELAJARAN TEMATIK INTEGRATIF I	4	4	0	0	WAJIB	LAELATUL BADRIAH, S.Pd.I., M.Pd	LAELATUL BADRIAH, M.Pd., MARTALIA ARDIYANINGRUM, S.Si., M.Pd. MUFIDA AWALIA PUTRI, M.Pd., SUKATI, S.Pd.I., M.Pd., AHMAD SYAMSUL ARIFIN, M.Pd.I

SEMESTER 06									
1	MI143	MICROTEACHING	3	0	3	0	WAJIB	SUKATI, S.Pd.I., M.Pd.	MUFIDA AWALIA PUTRI, M.Pd, KHANIF MAKSUM, M.Pd.I, SUKATI, S.Pd.I., M.Pd
2	MI155	PENGEMBANGAN DESAIN PEMBELAJARAN TEMATIK INTEGRATIF III	4	4	0	0	WAJIB	SUKATI, S.Pd.I., M.Pd.	LAELATUL BADRIAH, M.Pd., MARTALIA ARDIYANINGRUM, S.Si., M.Pd. MUFIDA AWALIA PUTRI, M.Pd., SUKATI, S.Pd.I., M.Pd., AHMAD SYAMSUL ARIFIN, M.Pd.I
3	MI158	PENGEMBANGAN DESAIN PEMBELAJARAN UNTUK MULO K DI MI II	2	2	0	0	WAJIB	SUKATI, S.Pd.I., M.Pd.	KHANIF MAKSUM, M.Pd.I, SUKATI, S.Pd.I., M.Pd
4	MI164	EDU-TECH-PRENEUR	2	1	1	0	WAJIB	AHMAD SYAMSUL ARIFIN, M.Pd.I	AHMAD SYAMSUL ARIFIN, M.Pd.I
5	MI226	KEPANDUAN	2	0	2	0	WAJIB	LAELATUL BADRIAH, S.Pd.I., M.Pd.	TEAM KWARCAB
6	MI227	BIMBINGAN DAN KONSELING DI MI*	2	2	0	0	PILIHAN	NI'MAH AFIFAH, M.Ag., M.Pd.I	Dr. KANA SAFRINA ROUZI, M.Si / NI'MAH AFIFAH, M.Ag., M.Pd.I
7	MI228	PENDIDIKAN MULTIKULTURAL*	2	0	0	0	PILIHAN	AHMAD SYAMSUL ARIFIN, M.Pd.I	Dr. KANA SAFRINA ROUZI, M.Si / NI'MAH AFIFAH, M.Ag., M.Pd.I
8	MI229	METODOLOGI PENELITIAN LANJUTAN	2	1	1	0	WAJIB	MARTALIA ARDIYANINGRUM, S.Si., M.Pd.	Dr. KANA SAFRINA ROUZI, M.Si / AHMAD SYAMSUL ARIFIN, M.Pd.I
9	MI234	TAHFIDZ AL-QURAN*	2	0	2	0	PILIHAN	SUKATI, S.Pd.I., M.Pd.	SUKATI, S.Pd.I., M.Pd.



SEMESTER 07									
55	FAI007	KULIAH KERJA NYATA	4	0	0	4	WAJIB	MUFIDA AWALIA PUTRI, M.Pd	KHANIF MAKSUM, M.Pd., MUFIDA.M.Pd., NIMAH AFIFAH, M.Ag., M.Pd.I
56	FAI008	SKRIPSI	6	6	0	0	WAJIB	MUFIDA AWALIA PUTRI, M.Pd	LAELATUL BADRIAH, M.Pd., MARTALIA ARDIYANINGRUM, S.Si., M.Pd, MUFIDA AWALIA PUTRI, M.Pd., SUKATI, S.Pd.I., M.Pd., AHMAD SYAMSUL ARIFIN, M.Pd.I,
57	MI152	PRAKTEK PENGALAMAN LAPANGAN	4	0	0	4	WAJIB	MUFIDA AWALIA PUTRI, M.Pd	KHANIF MAKSUM, M.Pd., MUFIDA.M.Pd., NIMAH AFIFAH, M.Pd.
58	MI207	ETIKA DAN KEPERIBADIAN*	2	2	0	0	PILIHAN	Dr. KANA SAFRINA ROUZI, M.Si	Dr. KANA SAFRINA ROUZI, M.Si
59	MI211	PENDIDIKAN BERBASIS GENDER*	2	2	0	0	PILIHAN	Dr. KANA SAFRINA ROUZI, M.Si	Dr. KANA SAFRINA ROUZI, M.Si
60	MI212	MANAJEMEN BERBASIS MADRASAH*	2	2	0	0	PILIHAN	AHMAD SYAMSUL ARIFIN, M.Pd.I	Dr. MUSTAKIM, M.Pd.I, MARTALIA ARDIYANINGRUM, S.Si.,

SEMESTER 08									
1	FAI008	SKRIPSI	6	6	0	0	WAJIB	AHMAD SYAMSUL ARIFIN, M.Pd.I	AHMAD SYAMSUL ARIFIN, M.Pd.I
2	MI208	KAPITA SELEKTA PENDIDIKAN DASAR (MI/SD)*	2	2	0	0	PILIHAN	AHMAD SYAMSUL ARIFIN, M.Pd.I	AHMAD SYAMSUL ARIFIN, M.Pd.I
3	MI210	PENDIDIKAN REPRODUKSI, KESEHATAN DAN GIZI ANAK MI/SD*	2	2	0	0	PILIHAN	AHMAD SYAMSUL ARIFIN, M.Pd.I	DYAH PRADNYA, S.ST, M.KES, SITI NURUNNIYAH, S.ST., M.Keb, DARU ESTININGSIH, S.FARM.,M.SC., APT, MUHAMMAD G.A PUTRA, S.Kep.,Ns., M.Kep, YHONA PARATMANIETYA, S.GZ, MPH, RESTI KURNIA TRIASTANTI, S.Gz., M.PH, YULINDA KURNIASARI, S.GZ.,M.P.H.

### C. MATHEMATICS EDUCATION STUDY PROGRAM

#### 1. Structure Mathematics Education Study Program Organization

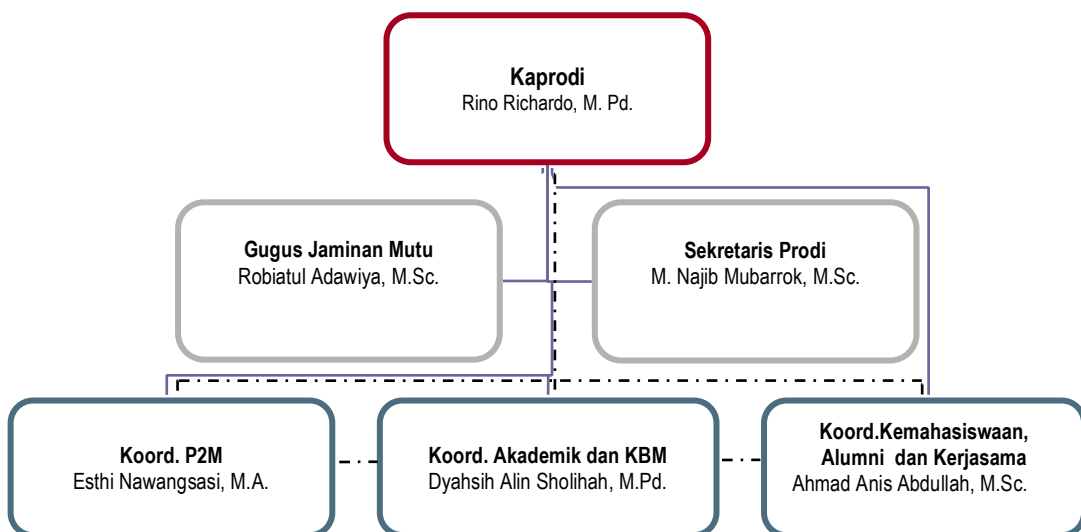


Image Structure PMAT Study Program Organization

## 2. Mathematics Education Study Program Profile

Mathematics is a subject that is a good core subject from basic education level to intermediate education. will but mastery mathematics in Indonesia still Enough low, p This based on TIMSS Survey results ( *Trends in International Mathematics and Science Study* ). Therefore Therefore, a capable teacher is needed to facilitate participant educate so that mathematical abilities start from draft base until application mathematics That Alone.

At the end of the 21st century, the world educational organization, namely UNESCO, has set four main pillars of education, namely *learning to know, learning to do, learning to be* , and *learning to live together in peace and harmony* . these four pillars No is something sequence , but rather each other complete One with others , so in learning at each level of education , teachers can create a learning atmosphere that contains these four pillars in a way together and balanced . with referring to the goal education national , decree must be studied for 9 years , actually mathematics , and the four pillars above , then hope for students on elementary and intermediate education in mathematics .

So that To realize these four pillars then, Learning Mathematics Latest, Requires a teacher Becomes a capable Learner Teacher facilitates participant his education becomes *Journey Learning* , so that teachers are able to create a learning process Contemporary learning in the 21st century.

Alma Ata University Mathematics Education Study Program has advantages, including:

- **Advantages 1**

Alma Ata University Mathematics Education Study Program Refers to Development Learning in the 21st century, capabilities process in think Creative, Innovative, Critical, So created Alma Ata Education graduate as “**21st Century Learning Teacher**”

- **Advantage 2**

Mathematics Education Study Program Print Mastering Educator Technology Information, Application Programs Mathematics and capable of developing Computer Based Learning Applications.

- **Advantage 3**

Mathematics Education Study Program Print educators who have values good Islam Because supported with courses Comprehensive diversity.

### 3. Vision

In 2040, Mathematics Education at Alma Ata University will be able to produce graduates who are superior and professional in the field of ICT-based mathematics learning and capable of global competitiveness, based on Islamic values and Indonesian nationality.

### 4. Missions

Organizing educational, research and community service activities (Tridharma of Higher Education) in the field of high quality mathematics education, Islamic, and oriented towards the interests of the people.

Developing an academic system and atmosphere that is conducive to the implementation of the Tridharma of Higher Education through gradual and continuous development of academic infrastructure, human resources and good university governance.

### 5. Objective

Objectives of the Mathematics Education Study Program including, among others following .

#### Goal 1:

- 1.1 Produce graduates of professional, superior, prospective mathematics teachers in innovation learning mathematics ICT-based, empowered global competitiveness, morals noble, upholding high values Indonesian nationality.
- 1.2 Produce reputable national and international scientific work that can increase the well-being of Indonesian society and be meaningful for the development of world civilization.

#### Goal 2:

- 2.1. Build an atmosphere conducive academic for implementation activity tridharma college tall .
- 2.2. Develop study program governance system based on principles of *good university governance*.

## 6. Profile of Graduate of the Mathematics Education Study Program

Graduate of the Mathematics Education Study Program expected to be able to play a role in society as:

**Table 1. Description Profile of PMAT Study Program graduates**

No	PL Code	Graduate Profile (PL)
1	PL01	Graduates of the Alma Ata University Mathematics Education Study Program become prospective mathematics educators who are muttaqin, having the ability to plan, implement and evaluate mathematics learning at the secondary education level (SMP/MTs, SMA/MA/SMK)
2	PL02	Graduates of the Mathematics Education Study Program at Alma Ata University become novice researchers who are muttaqin, able to design the development of ICT-based learning tools
3	PL03	Graduates of the Alma Ata University Mathematics Education Study Program become successful entrepreneurs, able to create business opportunities in the field of mathematics education

## 7. Curriculum Design for the Mathematics Education Study Program

Mathematics Education study program curriculum consists of three groups eye college, that are eyes studying University level, eyes studying Faculty level, and eyes studying study program level. Number of credits required takes a total of 144 credits.

**Table 2. Subject Grouping**

No	Study Material Code	Study Materials	Category
1	BK01	Mathematics learning	PMAT Study Program Required
2	BK02	Educational science and institutional characteristics	PMAT Study Program Required
3	BK03	Basic and school mathematics	PMAT Study Program Required

No	Study Material Code	Study Materials	Category
4	BK04	Advanced mathematics	PMAT Study Program Required
5	BK05	Educational Research	PMAT Study Program Required
6	BK06	Entrepreneurship	University Compulsory
7	BK07	General	University Compulsory
8	BK08	Information Technology	PMAT Study Program Required

### 8. Distribution of Courses Per Semester

The spread of eye lectures and number of credits per semester in the Mathematics Education Study Program can be outlined as follows .

**Table 3. Distribution of Courses Per Semester**

No	MK Code	Course Name	Category	SKS	Semester								
					1	2	3	4	5	6	7	8	
1	PM089	Socio Anthropology of Education	Must	2	v								
2	PM090	Logic and Sets	Must	3	v								
3	PM091	Algebra and Trigonometry	Must	3	v								
4	UAA001.02	Islamic Religious Studies I	Must	2	v								
5	UAA004.02	Indonesian	Must	2	v								
6	UAA005.02	Civic education	Must	2	v								
7	UAA006.02	Pancasila	Must	2	v								
8	UAA007.02	English I	Must	2	v								
9	PM092	Plane Geometry	Must	2	v								
10	FITK002	Education Science	Must	2		v							
11	FITK003	English II	Must	2		v							
12	PM093	Number Theory	Must	2		v							

No	MK Code	Course Name	Category	SKS	Semester								
					1	2	3	4	5	6	7	8	
13	PM094	Probability Theory	Must	3		v							
14	PM095	Differential Calculus	Must	3		v							
15	FITK004	Educational psychology	Must	2		v							
16	UAA002.02	Islamic Religious Studies II	Must	2		v							
17	FITK008	Educational Statistics	Must	3		v							
18	PM096	Psychology of Learning Mathematics	Must	2			v						
19	PM097	English Mathematics	Must	2			v						
20	PM098	Integral Calculus	Must	3			v						
21	PM099	Linear Algebra	Must	3			v						
22	PM100	Space Geometry	Must	3			v						
23	PM101	Capita Selecta Mathematics I	Must	3			v						
24	PM102	Mathematical Computer Applications	Must	3			v						
25	PM103	Computer programming	Must	2			v						
26	UAA003	Islamic Religious Studies III	Must	2			v						
27	PM104	Advanced Calculus	Must	3				v					
28	PM105	Analytical Geometry	Must	3				v					
29	PM106	Advanced Statistics	Must	3				v					
30	PM107	Capita Selecta Mathematics II	Must	3				v					

No	MK Code	Course Name	Category	SKS	Semester								
					1	2	3	4	5	6	7	8	
31	PM108	Abstract Algebra	Must	3				v					
32	PM109	Mathematics Learning Methodology	Must	2				v					
33	PM110	Curriculum Review	Must	2				v					
34	PM111	Mathematics Learning Media	Must	2				v					
35	PM112	Differential Equations	Must	3					v				
36	PM113	Linear Programming	Must	3					v				
37	PM114	Geometry Transformation	Must	2					v				
38	PM115	Mathematical Statistics	Must	2					v				
39	PM116	Mathematics Learning Planning	Must	3					v				
40	PM117	Evaluation of Mathematics Learning Outcomes	Must	3					v				
41	FITK007	Educational Research Methodology	Must	2					v				
42	PM118	ICT Integration in Mathematics Learning	Must	3					v				
43	PM119	History of Mathematics	Must	2					v				
44	FITK006	Micro Teaching	Must	2						v			
45	FITK009	Field Experience Practice (PPL)	Must	4						v			
46	PM120	Internship I	Must	1						v			
47	PM121	Internship II	Must	1						v			

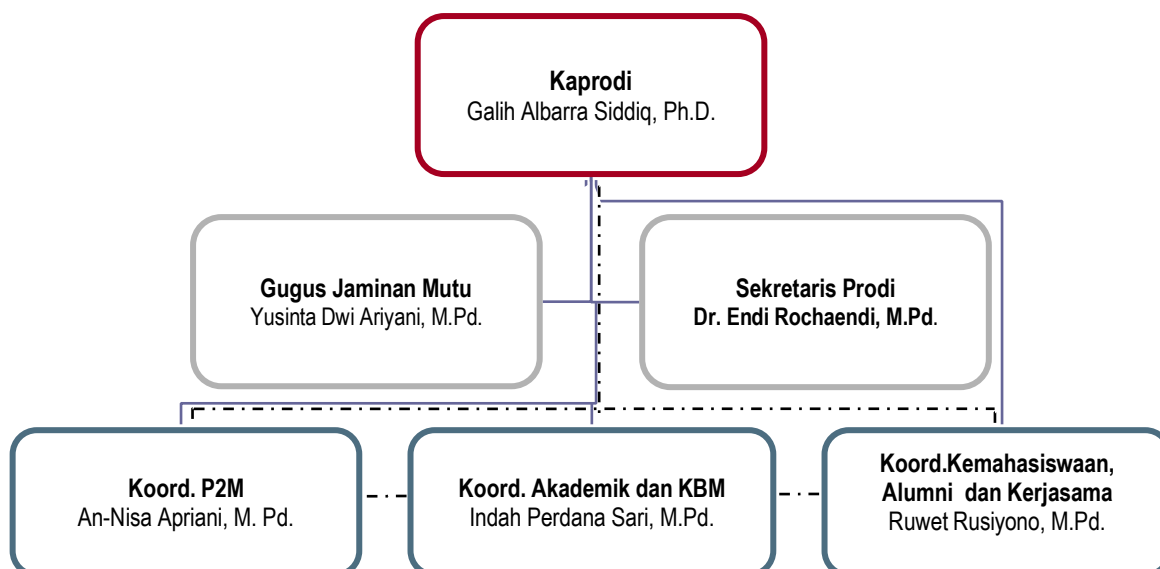
No	MK Code	Course Name	Category	SKS	Semester								
					1	2	3	4	5	6	7	8	
48	FITK001	Education Management	Must	2							v		
49	FITK005	Teaching Profession	Must	2							v		
50	PM122	Advanced Education Research Methodology	Must	2							v		
51	PM123	STEM-based Mathematics Learning	Choice	2							v		
52	PM124	Ethnomathematics	Choice	3							v		
53	PM125	Numerical Methods	Choice	3							v		
54	PM126	Philosophy of Mathematics Education	Choice	2							v		
55	PM127	Economic math	Choice	2							v		
56	PM128	Study of Literacy and Numeracy in Mathematics Learning	Choice	3							v		
57	FITK010	Real Work Lectures (KKN)	Must	4								v	
58	PM129	Multimedia Computer	Must	2								v	
59	UAA008.02	Entrepreneurship	Must	2								v	
60	PM130	Multivariate Statistics	Choice	3								v	
61	PM131	Discrete mathematics	Choice	2								v	
62	PM132	Nonparametric Statistics	Choice	2								v	
63	PM133	Real Analysis	Choice	3								v	



No	MK Code	Course Name	Category	SKS	Semester								
					1	2	3	4	5	6	7	8	
64	PM134	International Mathematics Education Review	Choice	2								v	
65	PM135	3D Animation	Choice	3								v	
66	PM136	Educational Games	Choice	3								v	
67	PM137	Introduction to Game Design	Choice	2								v	
68	PM138	Introduction to Mobile Devices	Choice	2								v	
69	FITK011	Thesis	Must	6									v

## D. PRIMARY SCHOOL TEACHER EDUCATION STUDY PROGRAM

### 1. Structure Organization



### 2. Profile of the Elementary School Teacher Education Study Program

Primary School Teacher Education is the program that organizes its education relevant elementary school teachers with demands child development, progress

education and society going to school featured and as center development education Primary School (SD) teachers are professional, *muttaqin*, superior and innovative.

Challenge the 21st century has set four main pillars of education, that is *learning to know*, *learning to do*, *learning to be*, and *learning to live together in peace and harmony*. The pillar requires teachers to behave communicative, inclusive, objective, tolerant, adaptive, participative and transformative. So that For realizing four pillars, Alma Ata University Primary School Teacher Education Study Program produces Indonesian teachers with glorious morals in accordance with national needs and challenges of the 21st century.

Alma Ata University Elementary School Teacher Education Study Program has advantages, including:

- **Advantages 1**

School Teacher Education Study Program The basis of Alma Ata University is the study program pioneer and superior in the field of school teacher education base in a national and regional way.

- **Advantage 2**

Elementary School Teacher Education Study Program produces capable elementary school teachers plan, implement, evaluate and develop education based on scientific, characterful, innovative and possessive outlook areas that can increase the quality of learning at school.

- **Advantage 3**

Primary School Teacher Education Study Program print supported *muttaqin* educators with there are courses Islamic Religious Studies comprehensive .

### 3. Vision

In 2040, Alma Ata University's PGSD will become a study program front in producing prospective elementary school teachers who excel in the field development education **character** based values Islam and Indonesian nationality, independent, empowered global competitiveness, contribute to intelligence life nation.

### 4. Missions

- 1) Organize activity Tridharma Quality universities high, Islamic, and oriented towards development educational character and educational needs base.
- 2) Develop system and atmosphere conducive academic for implementation Tridharma College tall through development good Study Program management in a gradual and continuous way To support come true *good university governance*.

### 5. Objective

The objectives of the Primary School Teacher Education Study Program include: following.

**Goal 1:**

- 1.1 Produce graduates who excel in the field of development education character, competent, professional, empowered global competitiveness, noble morals, as well as uphold tall values Islam and Indonesian nationality
- 1.2 Produce scientific work reputable national or international Good in a way direct or No direct can increase the well-being of Indonesian society and meaningful for development world civilization.

**Goal 2:**

- 2.1 Build an atmosphere conducive academic for its implementation activity tridharma college tall
- 2.2 Implementation of governance system faculty based principles of *good university governance*.

**6. Profile of Graduate of the Elementary School Teacher Education Study Program**

Graduates of the Primary School Teacher Education Study Program are expected to be able to play a role in society as:

Table Profile Graduate of

No	Graduate Profile of	Description
1.	Prospective Educator Elementary school	Educator at school level the basis for planning, implementing, evaluating and developing learning based on science, <b>character</b> , and innovation For increasing the quality of school education base as well as capable of inspecting management financing education in a professional way.
2.	Assistant Researcher / beginner researcher	Assistant capable researchers solve problem learning as well as capable of producing innovation learning which is tested For enhancing the quality of education at school base especially in education <b>character</b>
3	<i>Edupreneur</i>	Capable <i>Edupreneur</i> create business opportunities in an independent way or through partnership with others in the field education school base

**7. Curriculum Design for Primary School Teacher Education Study Program**

Primary School Teacher Education study program curriculum consists of from three groups eye college, that is eye studying University level, eyes studying Faculty level and eyes studying study program level. Number of credits required taken totaling 146 credits, which were implemented normally in 8 semesters.

**Table 5. Course Grouping According to Position and Code**

COURSE STANDINGS	CODE	NUMBER OF CREDITS
1. Subject University level	UAA	14
2. Subject Faculty level	FKIP	33
3. Subject study program level		
A. Subject must	elementary	91
B. Subject choice	school	10
	elementary school	
	school	
<b>Amount</b>		<b>148</b>

### 8. Distribution of Courses Per Semester

Spread eye lectures and number of credits per semester in the Elementary School Teacher Education Study Program can be outlined as follows .

**Table . 7 Distribution of Courses Per Semester**

SEMESTER I						
No	MK Code	Courses (MK)	Weight credits			
			Theor y	Practice	Practice	Amount
1	SD053	Basic Concepts of Biology	2	0	0	2
2	SD056	Philosophy of Education	2	0	0	2
3	SD057	Basic Concepts of Science Knowledge Social	3	0	0	3
4	SD058	Knowledge Social Basic Culture	2	0	0	2
5	SD059	Psychology General	2	0	0	2
6	UAA001.01	Islamic Religious Studies 1	1	1	0	2
7	UAA004.01	Indonesian	2	0	0	2
8	UAA005.01	Civic education	2	0	0	2
9	UAA006.01	Pancasila	2	0	0	2
10	UAA007.01	English 1	2	0	0	2
<b>Total Semester I Study Load</b>			21	0	0	21

**Table 13. List of second semester courses**

SEMESTER II
-------------

No	MK Code	Courses (MK)	Weight credits			
			Theor y	Practice	Practice	Amount
1	FKIP002.01	Education Science	2	0	0	2
2	FKIP003.01	English 2	2	0	0	2
3	FKIP004.01	Educational Psychology	2	0	0	2
4	SD054	Basic Concepts of Physics	2	0	0	2
5	SD060	Concepts of Elementary School Indonesian	3	0	0	3
6	SD061	Basic mathematics	3	0	0	3
7	SD062	Planning Learning	2	0	0	2
8	SD063	Thematic Learning	2	0	0	2
9	SD064	Evaluation Learning	2	0	0	2
10	UAA002.01	Islamic Religious Studies 2	2	0	0	2
<b>Total Study Load for Semester II</b>			22	0	0	22

**Table 13. List of third semester courses**

SEMESTER III						
No	MK Code	Courses (MK)	Weight credits			
			Theor y	Practice	Practice	Amount
1	FKIP001.01	Education Management	2	0	0	2
2	SD065	Science Education Knowledge Elementary School Social	3	0	0	3
3	SD066	Guidance Counselling	2	0	0	2
4	SD067	Learning Strategy Teach	2	0	0	2
5	SD068	Learning Technology Information and Communication	1	1	0	2
	SD069	Development Participant Educate	2	0	0	2
...	SD070	Management Class	2	0	0	2
	SD071	Learning Literacy in Elementary School	2	0	0	2
	SD072	Inclusive Education	2	0	0	2
	UAA008.01	Entrepreneurship	2	0	0	2
<b>Total Study Load for Semester III</b>			20	1	0	21

**Table 13. List of IV semester courses**

<b>SEMESTER IV</b>						
<b>No</b>	<b>MK Code</b>	<b>Courses (MK)</b>	<b>Weight credits</b>			
			<b>Theor y</b>	<b>Practice</b>	<b>Practice</b>	<b>Amount</b>
1	FKIP005.01	Professional Teachers	2	0	0	2
2	FKIP008.01	Educational Statistics	3	0	0	3
3	SD073	Learning Early Grade Elementary Mathematics	2	1	0	3
4	SD074	Early Grade Elementary School Indonesian Language Learning	2	1	0	3
5	SD075	Elementary Civics Learning	1	1	0	2
	SD076	Early Grade Elementary School Science Learning	2	1	0	3
...	SD077	Elementary science learning	2	1	0	3
	SD078	Educational Leadership	2	0	0	2
	SD079	Development Curriculum	2	0	0	2
<b>Total Study Load for Semester IV</b>			18	5	0	23

**Table 13. List of V-semester courses**

<b>SEMESTER V</b>						
<b>No</b>	<b>MK Code</b>	<b>Courses (MK)</b>	<b>Weight credits</b>			
			<b>Theor y</b>	<b>Practice</b>	<b>Practice</b>	<b>Amount</b>
1	FKIP007.01	Educational Research Methodology	2	0	0	2
2	SD080	Apprenticeship	0	0	2	2
3	SD081	Class Indonesian Language Learning Carry on	2	1	0	3
4	SD082	Learning Elementary School Science Class Carry on	2	1	0	3
5	SD083	Character building	2	0	0	2

	SD084	IT based Instructional Media	1	1	0	2
...	SD085	Problematic Elementary School Learning	2	0	0	2
	SD086	Living Values Education	2	0	0	2
	SD087	Learning Character Based on Children's Literature	2	0	0	2
	SD088	Learning Elementary School Mathematics Class Carry on	2	1	0	3
<b>Total Study Load for Semester V</b>			17	4	2	23

**Table 13. List of VI semester courses**

<b>SEMESTER VI</b>						
<b>No</b>	<b>MK Code</b>	<b>Courses (MK)</b>	<b>Weight credits</b>			
			<b>Theor y</b>	<b>Practice</b>	<b>Practice</b>	<b>Amount</b>
1	FKIP006.01	Micro Teaching	0	2	0	2
2	SD089	Scouting	1	0	0	1
3	SD090	Multicultural Education	2	0	0	2
4	SD091	Physical Education and Children's Health	2	1	0	3
5	SD092	Batik Education	1	1	0	2
6	SD093	Classroom action research	2	0	0	2
7	SD094	Management Library School	2	0	0	2
8	SD095	Based on Local Culture Education	2	0	0	2
<b>Total Study Load for Semester VI</b>			12	4	0	16

**Table 13. List of VII semester courses**

<b>SEMESTER VII</b>						
<b>No</b>	<b>MK Code</b>	<b>Courses (MK)</b>	<b>Weight credits</b>			
			<b>Theor y</b>	<b>Practice</b>	<b>Practice</b>	<b>Amount</b>
1	Fkip009.01	Practice Experience Field (PPL)	0	0	4	4
2	Fkip010.01	Studying Real Work (KKN)	0	0	4	4

3	SD055	Development Based Elementary School Teaching Materials Character	2	0	0	2
4	SD096	Arts and Skills Education	1	1	0	2
5	SD097	Arts Education Music, Dance, and Drama	1	1	0	2
	SD098	Javanese Language Learning	2	0	0	2
...	SD099	Management Based School	2	0	0	2
	SD100	Advanced Education Statistics	2	0	0	2
<b>Total Study Load for Semester VII</b>			10	2	8	20

**Table 13. List of VIII semester courses**

<b>SEMESTER VIII</b>						
<b>No</b>	<b>MK Code</b>	<b>Courses (MK)</b>	<b>Weight credits</b>			
			<b>Theor y</b>	<b>Practice</b>	<b>Practice</b>	<b>Amount</b>
1	FKIP011.01	Thesis	6	0	0	6
<b>Total Study Load for Semester VIII</b>			6	0	0	6



## CHAPTER IV ACADEMIC REGULATIONS

Academic activity suite at a college high need regulation academics will become guidelines in maintaining academic activity. Regulation academics at the University of Alma Ata (UAA) is a series of procedures and policies implemented To achieve objective learning through the learning process teaching and other academic activities in an effective and efficient way.

The following will explain related selection of new student reception, mentoring academics, lectures and other academic regulations that apply within Alma Ata University.

### REGISTRATION AND SELECTION OF NEW STUDENT ADMISSIONS

Acceptance process for new students at UAA aims For filter and get candidate students who have adequate quality and fulfill general or special requirements For Can take part in the learning process in study programs within the UAA environment . Registration and tests selection reception candidate students are done through a series of procedures that have been done set . Prospective students who are accepted to become UAA students are those who can pass selection and have complete academic requirements who have set . Procedures Registration and Selection Reception New Students This is arranged in Procedure Quality number PM-AA-PT-7.5.5 about reception new students .

#### 1. Registration Procedure

- a) Prospective students are students who have graduated from SMA/SMK/MA equivalent.
- b) One time registration , candidate student entitled Choose 2 study programs of interest .
- c) Students who register for study programs at the Faculty Sciences health apart from mandatory science take part in the matriculation program.
- d) Midwifery study program minimum height 150 cm.
- e) Students who register for study programs faculty knowledge computer besides from science and computer vocational school / similar must follow matriculation.
- f) Fill in the overall registration form *online* or come directly to the Alma Ata University campus at <http://almaata.ac.id/penerimaan-mahasiswa-baru>
- g) Pay cost registration and tests health in accordance with applicable provisions . ( provision cost registration and tests health )
- h) Complete online registration form at <http://almaata.ac.id/penerimaan-mahasiswa-baru> .
- i) Complete registration conditions in the form of ;
  - a. 1 FC sheet of SMA/SMK/MA equivalent diploma and list of legalized grades.
  - b. 1 sheet of completed FC D 3 diploma and transcript mark legalized, minimum GPA of 2.75 institutions with at least the same accreditation. (for transfer programs level)
  - c. 1 FC sheet of S1 nursing diploma and transcript mark legalize, minimum GPA of 3 institutions with at least the same accreditation. (for professional programs nurse).

d. Wave I registrants can use FC report until semester 4 which is legalized.

## 2. Acceptance Path:

### a) Test Path (NON COMPLETE).

The NON UTUL path is track Selection Reception New Student (SIPENMARU) for SMA/SMK/MA equivalent graduate based on performance candidate student with NON COMPLETE convenience . **The NON UTUL route includes :**

1. Reception Seedlings Regional Excellence (PBUD)
2. Reception Interests and Abilities Report Card (PMDK-R)
3. Reception Interests and Abilities National Examination (PMDK-UN)
4. Selection Student Achievers (SSSB).

### Terms and Conditions for NON UTUL Routes.

TRACK	DESCRIPTION	ACHIEVEMENT REQUIREMENTS
PBUD	<b>NON UTUL selection</b> path based on <b>ARTS/SCIENCE - SCIENCE/SPORTS achievements</b>	Minimum 3rd place winner at high school level or equivalent in the district with average report card score: 1) Minimum average FIKES 7. 2) Apart from FIKES, the minimum average is 5.5. <b>( Files ; legalize FC championships and legalize FC report cards )</b>
PMDK-R	<b>NON UTUL selection</b> path based on <b>REPORT VALUE</b>	✓ Average value report card 7.5, for the Faculty of Health Sciences from IPA. ✓ Average value report card 7, for eye lesson relevant until semester 5. <b>( Files ; Legalize FC report cards up to semester 5)</b>
PMDK-UN	<b>NON UTUL selection</b> path based on <b>UN VALUE</b>	average pure UN score is 7 and not There is a mark below 5.5. <b>(File; FC SKHUN Legalization)</b>
SSSB	<b>NON UTUL selection</b> path based on Achievements and Recommendations Manager Boarding school. <b>(Tahfidz, MTQ/MHQ/Read the Yellow Book)</b>	✓ Average value report card 6.5, for eye lesson relevant in semesters 3, 4, and 5 and not There is mark below 5.5. ✓ Certificate from Manager boarding school or chaplain . <b>( Files ; Legalize FC report cards up to semester 5 and legalize championship )</b>

### b) Written Test Track (UTUL).

Test Track is track Selection Reception New Student (SIPENMARU) for SMA/SMK/MA equivalent graduates who have already determined their graduation based on test results.

**c) New Student Reception Period**

Reception candidate new students carried out 2 times One year Academic , Even (February) and Odd (September)

**d) Provision CBT Test.**

CBT test is one of the components of the academic potential test. To determine accepted or No accepted candidate Alma Ata University student. For implementation of the CBT test student candidates must fulfill a number of requirements that have been determined by Alma Ata University. As for the provisions of CBT tests are :

1. Prospective students have done registration past *online* (data entry at <http://almaata.ac.id/penerimaan-mahasiswa-baru/pengisian-data/> ) and have submitted registration conditions.
2. Prospective students have chosen date test yourself at the moment do data entry passes page at point 1 ( one ). Date selected test maximum 10 days since registration *on line* completed .
3. Prospective students log in with the password obtained from officer registration .
4. Prospective students must do questions as many as 40 questions in 60 minutes.
5. Prospective students said to pass if the candidate the student is concerned can answer questions with Correct as much as 45%.
6. Prospective students who fail in the CBT test process are given the chance to do the test repeat CBT 2 times maximum time is 3 days .
7. Prospective students who have done CBT test 3 times and state failed , then candidate the student concerned If Want to study at Alma Ata University, must carry out the registration process from beginning .
8. CBT tests include materials; Indonesian, English, Basic Mathematics, Science, and Religion.

**e) Provision Medical check up .**

Health test is Suite a must test passed by the candidate new student Alma Ata University as part of Suite decisive test candidate new student accepted or No enter to Alma Ata University. As for the provisions of health test at Alma Ata University as follows ;

1. Prospective students have declared to have passed the CBT test as stated in the Alma Ata University CBT program.
2. Prospective students do health tests at Alma Ata Medical Center (AAMC).
3. Prospective students do test health care outside AAMC is mandatory to do verification test health at AAMC.
4. Health care tests carried out by doctors examiner health tests at AAMC are;

- a. **Physical Inspection, including** ; Height, Weight, Blood Pressure (Eye Vision, Blindness Color), Ears, Mouth and Neck, Heart and Lungs, and Reflexes (Pupils, Patella, and Achilles)
- b. **Test Laboratories, including** ; Drugs (Amphetamine (AMP), THC (Cannabis/Marijuana), PP Test, and Blood Type .

**f) Provision Test Interview.**

1. Prospective students have declared to have passed the health test by AAMC.
2. Prospective students do test interview with team appointed interviewer based on the Decree of the Chancellor of Alma Ata University.
3. Interviewer do interview to candidate student For dig related information;
  - Identity candidate student (name, address, origin place of Origin school).
  - Reason choose study program related
  - Reason choose UAA
  - Parental education
  - Ability parents' economy.
  - Ability adaptation candidate student .
  - Ability Reciting Al-Qur'an.
  - Ability to perform obligatory worship (prayer).
  - Performance of candidate students at school
  - Source UAA information .
4. If parents' economic ability No possible enter wrong One product, then interviewer direct candidate student to other products still available liked at UAA.
5. Interviewer determine candidate student accepted or No based on results of interview with candidate student .

**g) Provision Condition Registration**

CAMABA who are declared to have passed the test (passed the selection ) are given time For do registration maximum 1 week / 5 days Work since declared to have passed the test , if within 1 week / 5 days CAMABA work does not do registration then the status has passed the selection revoked . If CAMABA wishes For become Alma Ata student, then the person concerned must register Again from stage beginning.

**Regular**

1. Alma Ata University Yogyakarta PMB Selection Results Letter ;
2. Proof of deposit / transfer fees registration
3. Photocopy of completed SMA/MA/SMK/MAK diploma legalized.
4. Passport photo with red ground background size 3 x 2 = 2 sheets
5. Informed Consent Form has a stamp of IDR 6000 Already signed
6. Statement letter about return cost stamped Rp. 6000 already signed .

7. Photocopy of Prospective Student's KTP New 1 the sheet is still applies .
8. Photocopy of valid KTP of parents (father/mother). applies .
9. Photocopy of Birth Certificate 1 sheet.
10. Entire file entered in stop- map, with provision :
  - a. Color stop-map green old (008000) for Faculty Health Sciences
  - b. Color stop-map green light (00FF00) for Faculty teacher training and science education
  - c. Color stop-map blue sea (00 FFFF) For Faculty Knowledge Computer
  - d. Orange stop-map (FFA500) for Faculty of Economics and Business .

### **Switch Levels .**

1. Photocopy of PMB Selection Results Letter from Alma Ata University Yogyakarta;
2. Proof of deposit / transfer fees registration
3. Photocopy of completed diploma legalized 1 sheet .
4. Passport photo colored size 3 x 2 = 2 sheets
5. Informed Consent Form has a stamp of IDR 6000 Already signed
6. Statement letter about return cost stamped Rp. 6000 already signed .
7. Photocopy of 1 sheet of valid KTP applies.
8. Photocopy of valid ID card of parents / husband / wife applies.
9. Photocopy of Act 1 sheet.
10. Entire file entered in the color Stop-map green old (008000)

### **h) Provisions *Informed consent***

With this state that I will follow all the rules and regulations that apply at Alma Ata University Yogyakarta, as follows :

1. Applicable Honest in all over learning activities/process teaching.
2. Obey all regulations set by Alma Ata University Yogyakarta.
3. Uphold tall and guarded Name both the Foundation and Alma Ata University Yogyakarta.
4. Hold stick to etiquette/polite manners polite association in the nor outside campus environment.
5. Maintain cleanliness of room lectures, practicums, and nursing all facility education.
6. Get dressed neat and polite, no permitted wear sandals/slippers, and a t-shirt without collar during follow educational activities on campus or on the ground practice.
7. For student sons and daughters No permitted use jeans or culottes shorts .
8. For student sons No permitted longish hair, no can wear earrings or not able to use piercings (earrings in places where they are not supposed to be).
9. For student daughter must be dressed Muslim woman, face must look, no allowed use closing face (veil) so easily recognized by faculty staff / administration staff or colleague student anywhere he is located in the Alma Ata University area of Yogyakarta.
10. No smoking inside campus.

11. No direct involvement or No direct involvement with drug cases (narcotics, psychotropics, and other addictive substances).
12. No do action Good direct nor No directly detrimental / polluting Name both Alma Ata Foundation/University.
13. No do political practical and do not develop / facilitate / provide opportunities for practical political activity on the Alma Ata University campus.
14. For prospective students Non-Muslim permitted entered Alma Ata University with Alma Ata University records only provide eye studying Islamic Religion and the students concerned must follow .
15. For non-Muslim student daughters must dress Muslim and wear the hijab.
16. I am also willing to accept provisions below This :

**I can anytime issued from Alma Ata University Yogyakarta if proven :**

1. Involved drug cases (narcotics, psychotropics, and other addictive substances).
2. Involved criminal / criminal action.
3. Do damage to the facilities available inside campus .
4. Do direct action or No direct can be detrimental / polluting Name either the Foundation and or Alma Ata University Institution Yogyakarta
5. Do practical politics and develop / facilitate / deliver practical political activity opportunities on the Alma Ata campus
6. Pregnant or impregnate outside wedding .
7. Based on evaluation Periodic GPA < 2.75 in semester IV for S1 Study Program or semester III for D3 Study Program.

**i) Provision Return Cost .**

State agree that :

1. If I did not pass the National Examination in 2015 and later chose To resign myself as a candidate student at Alma Ata University Yogyakarta, then I sincere that Alma Ata University Yogyakarta will only return **75%** of the cost of completed registration I pay ;
2. If I resign myself Because be accepted and study at a State University (University, Institute, College, Academy, or Polytechnic), then I sincere that Alma Ata University Yogyakarta will only refund 50% of cost completed registration I pay;
3. If I resign myself Because be accepted and study at a private university (university, institute, high school, academy, or Polytechnic) Non Health, then I sincere that Alma Ata University Yogyakarta will only refund 40% of cost completed registration I pay;
4. If I resign myself Because other reasons as mentioned in points 1 to 3 above , or resign myself after academic activity started so I since that the registration money has been paid I pay **No will returned** by University Alma Ata Yogyakarta.

**j) Provision Regional Test**

That To make it easier service and efficiency cost candidate registrant Student Newly at Alma Ata Yogyakarta Higher Education Institution (PT), the Head of PT Alma Ata Yogyakarta gave policy to partner Reception Student New (PMB) for stage PMB test in each area with provision as following :

1. Partners submit Alma Ata University PMB test to PT Alma Ata PMB committee.
2. Implementation of the Alma Ata University PMB test by regional partners becomes the responsibility of the Alma Ata University PMB committee.
3. Partners who will stage the test in the area first time, Overseer test must be from Alma Ata University, Yogyakarta.
4. Quota participant PMB tests in the regions have a minimum of 10 participants , if not enough from quota (10 participants ) test Can be done with provision Can full costs required in the test process the .
5. Partners provide cost accommodation, transport tickets economy, accommodation 2 nights 1 day and lump sum amounting to Rp. 500,000,- .
6. Associated costs with test in the area become Partner responsibilities .
7. Organizing partner test second, third and so on will be considered supervisor from area with see development and accountability as well as trust PMB committee towards the submitting partner test in the area.
8. Question participant test candidate student just brought by the supervisor test from Alma Ata University Yogyakarta PMB committee .
9. Partners provide doctors for the test process existing health with NIP.
10. Test Participants will be considered get on the wave held test if do registration in accordance with registration date determined by the Alma Ata Yogyakarta University PMB Committee .
11. If deep provision This There is a mistake will be held change For common interest and become right Alma Ata University Yogyakarta PMB committee .

**k) Provision of Free CBT Test**

**Provision of Free Test Written:**

1. Rata-Rata Raport Kelas X-XI  $\geq 7,5$  ( Bagi Jurusan IPA/Kesehatan) dan Rata-rata  $\geq 8$  (Jurusan IPS, Bahasa, SMK dll) Khusus Lulusan Tahun 2015.
2. Rata – rata Nilai Ujian Nasional  $\geq 7,5$  ( Bagi Jurusan IPA/Kesehatan) dan Rata-rata  $\geq 8$  (Jurusan IPS, Bahasa, SMK dll) dari berbagai tahun lulusan.

**Registration Flow Free Exam Written:**

1. Making Transfers Cost Registration IDR 250,000 to BNI Bank above name Alma Ata Account Number 108-0606123.
2. Fill in Biodata via online at [www.almaata.ac.id](http://www.almaata.ac.id)
3. Condition files:
  - FC. Report card / diploma
  - Proof of Fee Transfer Registration .
  - Certificate Healthy be equipped blind color (will be verified at Alma Ata Campus)

- As many 3x4 photos 2 sheets

Send condition to Alma Ata University Yogyakarta Campus Jl. Southwest Ring Road No 1 Tamantirto Yogyakarta or Scan and send an e-mail via e-mail [pmb@almaata.ac.id](mailto:pmb@almaata.ac.id) / [uua@almaata.ac.id](mailto:uua@almaata.ac.id) .

4. Certificate of ACCEPTANCE/NOT ACCEPTANCE will be sent via email or post
5. CAMABA is expected registration in accordance with specified date .
6. Information Activity Student New please contact our contact person or visit [www.almaata.ac.id](http://www.almaata.ac.id)

#### **I) Registration Repeat Old Student**

1. Registration repeat old students are carried out every semester to give to those concerned rights as students of Alma Ata University;
2. Implementation registration repeat administration covers Payment Donations Education Administration (SPP), Charging Card Plan Study (KRS), and other costs are regulated separately .
3. Students who don't do registration repeat until limit end of the specified registration period in academic calendar stated as non-active students.
4. Application for leave status can be processed if done before her registration period ends.
5. Provisions about submission paid leave will be arranged separately .
6. Registration repeat can be carried out by students with leave status in the previous semester For get active status return .
7. Students who have carry out registration repeat get valid active status for 1 (one) semester and are eligible to follow academic activities as stated inside plan studies nor non-academic activities others and make use of their facility designated campus for students.

#### **A. MATRICULATION**

For students new origin from non-science classes are required to follow matriculation before lectures started . Matriculation This is intended for new students. Non-science have sufficient supplies adequate about knowledge knowledge lots of nature related to knowledge health . With thus Non-science students No left behind from science students in the learning process next at UAA. Provisions about matriculation will be notified further by the matriculation committee.

#### **B. THE CHARM OF THE TA'ARUF TIME SERIES (GEMS)**

Charm The Ta'aruf Period Series (PERMATA) is a series of introductory periods campus is mandatory followed by the entire student new to Alma Ata University .

Activity This aims For introduce and give comprehensive understanding environment Alma Ata Campus as academic environment as well as introduce applicable system / mechanism inside it . Among other things, introduction to Softskil / Character To



-Alma Ata-an, Introduction to System Administration Academic, introduction to procedure administration Finance, Regulation Student Affairs, as well as Related Units in the Alma Ata environment. If There are students who don't attend GEMS or do not pass the mandatory attendance at PERMATA in 2018 next.

## **C. ACADEMIC GUIDANCE**

### **1. Academic Mentoring**

In frame help students complete the study program, accordingly with procedure quality No. PM-AA-PT-7.5.1 that each student will be guided by an Academic Mentor (PA). The PA lecturer is appointed lecturer To guide group students and aims For help students finish studies in accordance with the time that has been determined .

#### **a. Lecturer Mentor Academic**

- 1) Duties and obligations of PA lecturer as follows:
  - a) Explain all educational programs that will be held during studying in a study program at Alma Ata University.
  - b) Help students prepare a learning program in a complete way.
  - c) Help students prepare a learning program during one semester is appropriate with the burden of study.
  - d) Identify academic problems faced students and join help in finding it way the solution .
  - e) Accountable implementation of academic tasks to Head of the study program.
  - f) Attend coaching meetings organized by Alma Ata University.
  - g) Every Academic Mentor has a Going to Success (KMS) Card
- 2) During going through education, students are entitled to get guidance from PA Lecturer. Right This includes :
  - a) Get academic guidance from PA lecturer at least 3 times in 1 semester, namely at the time filling in KRS, before UTS, and before UAS.
  - b) Consult possible problems bother smoothness studies student to PA.

## **D. STUDENT STATUS**

### **1. Student Active**

Active students are registered UAA students and/or have carried out the registration process in certain semesters of the academic year. Student active own full rights as UAA student .

### **2. Non-Active Students**

Inactive students are students who don't do registration (no registered) at the start of the semester and do not submit paid leave academic. Applicable provision For non-active students is as follows :

- a. Non-active students No own right For use facility Alma Ata campus .
- b. Inactive time taken into account as the study period has been taken by students concerned .
- c. While inactive all over mark the student concerned still applies
- d. The student will be issued a Warning Letter (SP) I One Sunday after KRS term limit .
- e. Later students responded to SP-I then quickly carried out the KRS process, then charged academic and administrative penalties in accordance with provisions .
- f. If during One month No heed SP-I, then the student will get SP-II to SP-III with a distance of 1 (one) month each;
- g. After One SP-III month no response , then student will stated go out from UAA Yogyakarta passing by letter decision chairman school tall .

### **3. Paid leave Academic**

1. Paid leave academic is the academic status given by the University to students who have allowed For No follow activity academics in a particular semester on permission of the Vice Chancellor I with certain provisions.
2. Paid leave academic can be given to students who have attended an educational program at least 2 (two) consecutive semesters, except There is a strong reason or something because it doesn't can be avoided.
3. Giving paid leave academic arranged as follows :
4. Eligible students submit paid leave academic is with provisions as follows:
  - a. It's active take a minimum of two semesters;
  - b. Number of credits completed taken No not enough of 35 credits;
  - c. GPA does not exceed 2.00 (two point zero);
  - d. The study period has been completed carried out student No beyond the maximum study period, namely semester 10 (ten) for D3 level students and semester 14 (four twelve) for undergraduate level students.
  - e. No own affords education costs
  - f. Submission permission paid leave academic can be submitted at least before the registration period ends .
  - g. Paid leave academic given maximum 2 semesters go through education at Alma Ata University.
5. During paid leave academic, then There are rights and obligations for students related to status, namely:
  - a. Student paid leave academic released from SPP money;
  - b. Vacation period academic No taken into account as a study period ;
  - c. During paid leave academic all over mark the student concerned is still valid;
  - d. Students on leave academic No entitled follow activity Study teach and use facilities Alma Ata University campus;
  - e. Students can extend paid academic leave with carry out same procedure .

- f. Students must carry out active return procedures if concerned students want to actively return;
- g. When active comes back, students are entitled to take appropriate credits with provisions based on Last semester Study Results Card (KHS). before submit paid leave academic .

**a. Procedure Active Again**

Medium student take paid leave academic if will actively return so mandatory procedures taken are:

1. Student submit active application return to the Vice Chancellor I cq . Director Learning at the beginning of the semester with know the parent / guardian , attach :
  - a. Certificate on leave / inactive previously ;
  - b. Final Study Results Card (KHS).
2. Submission application active return carried out during the registration period in the relevant semester;
3. Deputy Chancellor I and Director Learning study application active return .
4. If permitted, Vice Chancellor I through Director Learning will give letter permission active return to student;
5. Student carry out the her- registration process as it should with attached active permission letter back to KRS.
6. After the student carries out the registration process, then the student returns status as active student.

**4. Move or Go out**

1. Students who wish to move or go out must submit application to Vice Chancellor III cq Director Student and Alumni Affairs and ask for agreement from Lecturer Mentor Academic with attached:
  - a. Certificate free administration from Head of Financial Bureau;
  - b. Certificate free References from Alma Ata Library ;
  - c. Certificate free laboratory from Head Alma Ata Laboratory;
2. Then the student concerned will accept:
  - a. Transfer Decision Letter or Go out from Chancellor of Alma Ata University;
  - b. Academic Grade Transcript ;
  - c. Cover letter move to Universities will destination (if required).
  - d. Expelled students with consideration academic nor ethics No can be accepted Again become Alma Ata University student

**5. Drop Out**

Termination of Student Status (Drop Out) is the process of revoking student status on self UAA students caused by things as following :

- a. No responding to the Warning Letter III given from institutions ;
- b. Violate provisions law, morality and ethics (violations heavy).
- c. Mempunyai IPK  $\leq 1,50$  pada tiga semester pertama berturut-turut setelah mendapatkan surat peringatan.

- d. Student No can fulfill study period provisions
- e. Students who dropped out did not be able to be accepted again as students.

## E. LECTURES

Lectures during One year are shared in Odd Semester, Even Semester, and Short Semester. Odd semester held between September elementary school February , while Semester is Even held between month February elementary school July . Short semester is held after the Even Semester and before the Odd Semester next academic year.

### 1. System Limitations Unit Semester Credit (SKS)

The semester unit credit system is a dose of time activity learning that is charged to students per week per semester in the learning process through various forms of learning or big confessions on successful business students in following curricular activities in a study program.

Every odd and even semester consists of over at least 16 weeks of academic activity, including midterm exams and end of semester exams. Semesters last at least 8 weeks with the burden of studying a maximum of 9 credits.

The size burden studies student, confession on success business students, big success cumulative student as well as big business maintenance education for power teachers and institutions For one semester is stated in One Unit Semester Credit.

study load for the D3 Program is at least 108 (one hundred eight) scheduled credits for 6 (six) semesters and can be taken in time not enough of 6 (six) semesters and a maximum of 5 (five) academic years. The undergraduate study program load is at least 144 (one hundred four tens four) credits scheduled for 8 (eight) semesters and can be taken in time not enough from 8 (eight) semesters and a maximum of 10 (ten) semesters. Professional Study Program load is at least 24 (two tens four) credits for the form of ability service profession, held in a maximum of 6 (six) semesters or 3 (three) years academic.

System The learning applied by all study programs at Alma Ata University is a learning system that focuses on the learner or called *Student Centered Learning (SCL)* with a *Problem Based Learning (PBL)* approach

### 2. Credit system objectives

In the credit system burden study is a must be adapted by students to a particular level of studies stated in the form of a number of credit units. Based on existing differences interests , talents and abilities between one student with another, then way and time For finish eye programmed teachings for every student can be different One student with another even though they sit inside the same level of education . Basically objective principal use credit system is For:

- a. Give the opportunity to capable and active students learn to get it finished studies in a shorter time than the time that has been determined.
- b. Give the opportunity for students to get it follow activity appropriate education with interests , talents and abilities .
- c. Makes it easier to adjust curriculum to development science and technology.
- d. Notice system evaluation of student academic ability.

### 3. Semester Credit Units

Based on Regulation of the Minister of Research, Technology and Higher Education of the Republic of Indonesia Number 44 of 2015 concerning National Higher Education Standards. Study load student stated in mark credit For something eye lecture / practicum . Credit score For every eye lecture / practicum stated with SKS.

For maintenance college, grades one credit is specified based on burden studies which includes 4 (four) types of activity every Sunday in one semester that is a. studying ; b. responses and tutorials; c. seminar; and D. practicum , studio practice , practical workshop , or practice field .

- a. For form learning lectures, responses and tutorials, including: activities Study with stare advance 50 (fifty) minutes per week per semester; activity Study with assignment structure 60 (fifty ) minutes per week per semester; and activities Independent study 60 (six twenty) minutes per week per semester.
- b. For seminar learning form or Other similar learning form includes: activities Study stare advance 100 (one hundred) minutes per week per semester; and activities Independent study 70 (six twenty) minutes per week per semester.
- c. For practical learning form, studio practice, practical workshop, field practice, research, service to society, and/or other equivalent learning forms, it is 170 (one hundred and sixty) minutes per week per semester.

## F. LECTURE RULES

### 1. Code of Conduct Activity Learning

- a. Student entitled to follow lectures when Name student the registered as participant eye studying the proven with KRS.
- b. Applicable Honest in all over learning process activities teaching, researching and in doing action whatever it concerns Name Good alma mater.
- c. Obey all regulations set by the University, Study Program nor coordinator eye studying .
- d. Follow timetable lectures in class Where Name the student concerned has registered and prohibited move class without applicable procedures and without the permission of the Directorate Learning .
- e. Present appropriate time in accordance with specified schedule , limits tolerance lateness is 10 minutes .
- f. Follow lectures calmly and without making noise that disrupts the learning process.
- g. Guard cleanliness as well as join in care and maintenance of all educational facilities at Alma Ata University.
- h. Get dressed in accordance with regulations , neat and polite , as well as No wearing sandals.
- i. Give know in a written way if No can present follow lectures Because something urgent .
- j. Forbidden sign the attendance register on someone else's name .
- k. Forbidden smoking , eating and doing harm to others inside annoying class the way lectures .
- l. Forbidden use handheld telephone For needs other than those instructed by the lecturer guardian.
- m. Student No allowed to follow Final Semester/Block Exam if attendance < 75%

## **2. Code of Conduct lectures Practice**

- a. Student has registered and following test introduction .
- b. Students be present 10 minutes before the practical event start and use suit laboratory / equipment in accordance with provision implementation practice .
- c. During practice taking place students are forbidden to leave practice room without permission of lecturer / assistant.
- d. Deliver report practice in accordance with provisions , if No gather in accordance with time that has been determined will be imposed penalty .
- e. Follow the test end with the condition of having followed all practice events (100% mandatory) and have validated all over report practice.

## **3. Stage Practice Clinic / Profession**

- a. To be able to follow practice Clinic / Profession, students must have passed the pre-clinical test held by each study program.
- b. During undergo secretariat clinic student required:
  - 1) Wearing a uniform that has been determined, neat, and not wearing excessive accessories.
  - 2) Follow all over existing stations scheduled . Students who leave station on a specified schedule are required to follow last stage .
  - 3) Obey rules made by the house sick / land other practices .
- c. All regulation secretariat home clinic sick / land other practices that have not been listed in order This will be set separately .

## **G. EVALUATION**

1. Evaluation is held with various types of methods such as written exams, oral exams, assignments, and others in accordance with the nature and purpose of educational activities. Evaluation aim For :
  - a. Evaluate is a student has control material taught so that based on the results of the evaluation can be taken decisions to the student concerned .
  - b. Grouping students based on their abilities.
  - c. Evaluate material achievement and effectiveness of learning methods, so that students with reasonable effort can control the material taught
2. So the purpose and objectives of maintenance evaluation can be achieved, then need to be held evaluation several times that is formative evaluation, summative, and remediation at the end of studying.
3. Final grade awarded to student determined based on the data values provided to student in formative and summative evaluation the . In determining end weight the values that constitute its components need to be determined and given to students.

## **H. EXAM**

To find out student success so exams at UAA are held twice scheduled in one semester, namely: Mid-Semester Examination (UTS) and Final Semester Examination (UAS). UTS and UAS times have been specified in the UAA academic calendar. Subject will be tested on UAS if meeting has fulfilled provisions, ie minimum 75% of all over meeting / meeting advance and 100% for scheduled practice.

**a. Midterm Exam (UTS)**

Midterm Exam (UTS) Midterm Exam is something activities performed To know the level of progress of Study students and is an assessment process results Study students held in the middle of the semester.

Condition following UTS:

- 1) Has completed registration in the current semester, proven with KRS/Card Exam.
- 2) Have earned UTS validation from part administration finance .

**b. Examination (UAS)**

Conditions for taking the UAS:

- 1) Has completed registration in the current semester, proven with KRS.
- 2) Presence Minimum 75% coursework in subjects lectures being tested .
- 3) Have earned UAS validation from part administration finance .

**c. Regulation Exam**

- 1) Bring Current Student Identity Card valid;
- 2) Bring KRS/Card Exams that have been legalized by the Finance section;
- 3) Bring the write Alone tool;
- 4) Wearing uniforms and attributes complete in accordance with regulations;
- 5) Participants enter room 10 minutes before exam starts;
- 6) Sit on the chair in accordance with Number Sort Presence ;
- 7) Deactivate handheld telephone (HP) during exam;
- 8) Forbidden go out enter room exam without supervisor's permission ;
- 9) Pray before the exam starts ;
- 10) Tolerate 15 minute delay after exam starts.

**I. ASSESSMENT METHODS**

With the start developed and used system learning based competency in the UAA environment, then the assessment system used is absolute evaluation that is the Evaluation Reference Benchmark (PAP) system. PAP is system used To evaluate student ability in a way absolute to something benchmark that has been set moreover previously mentioned mark pass limit or minimum level of mastery . The assessment system used is an absolute evaluation that is an Evaluation Reference Benchmark (PAP) system with provisions:

No	Letter Quality	Quality Score	Value Range
1	A	4	≥ 80
2	AB	3.5	75 – 79
3	B	3	70 – 74
4	BC	2.5	65 – 69
5	C	2	60 – 64
6	D	1	50 – 59
7	E	0	< 50

Examinations at Alma Ata University were held twice scheduled in one semester, namely: Mid-Semester Examination (UTS) and Final Semester Examination (UAS).

UTS and UAS times have been specified in Alma Ata University academic calendar. Subject will be tested on UAS if meeting has fulfilled conditions, namely a minimum of 100% of all over meeting / meeting advance scheduled.

## J. PROVISIONS FOR ASSESSING STUDENT STUDY RESULTS

- a. Evaluation exam the end of the semester (UAS) is determined by the lecturer / team guardian eye studying concerned .
- b. Components / variables Assessment of Study Results Student (Semester Grade) consists of from :
  - 1) Examination Scores (NUAS)
  - 2) Midterm Exam Scores (NUTS)
  - 3) Daily Value (NH)
- c. Individual Student Assignments (Q&A, papers, Student participation)
- d. Task groups / seminars
- e. Recap Presence
- f. Calculation of Final Semester Grades for Theory (NAST) ( *recommended* )

$$NAST = \frac{(3 \times NUAS) + (2 \times NUTS) + (1 \times NH)}{6}$$

- g. Calculation of Final Semester Grades for Practice (NASP) ( *recommended* )

$$NASP = \frac{\text{Jumlah nilai seluruh keterampilan}}{\text{Jumlah Keterampilan}}$$

- h. Formula (NS)

$$NS = \frac{(NAST \times SKST) + (NASP \times SKSP)}{\text{Jumlah SKS}}$$

- i. Comprehensive test scores (NUK)

Comprehensive test scores obtained from Test Scores Phase I (NUHAP I), NUHAP II, NUHAP III and Written Test Score (NUT) with formula as follows:

$$NUK = \frac{(2 \times NUHAP I) + (2 \times NUHAP II) + (4 \times NUHAP III) + (2 \times NUT)}{10}$$

Value results from the Comprehensive exam will be stated in the predicate Satisfying or Very Satisfying or Pass with Praise .



## K. Evaluation at the end time limit

### a. Evaluation of Semester Study Results

Evaluation of Semester Study Results is carried out every year end of semester, includes activity education taken by students in that semester . Evaluation is carried out every semester with the Semester Achievement Index (IP) calculation using the formula as follows:

$$IP_{Semester} = \frac{\sum (AM \times SKS)}{\sum SKS}$$

Information :

AM = Quality Score

Credits = Credits

### b. Evaluation biannual First

Evaluation two years First done To determine whether student is permitted to continue studies or resign from UAA. Student permitted to continue when fulfilled conditions :

- 1) Gather at least 30 credits from the total credits in 2 years First without E value
- 2) Performance Index  $\geq 2.00$ .

If estimated student No reaches this condition, then by the Study Program Management will be given warnings and coaching by PA lecturers before evaluation end two year First held.

### c. Evaluation end of educational program

Evaluation end of educational program held for all students who have completed all specified and fulfilled credits condition to pass. Students who have completed the appropriate number of credits the regulations of each Study Program are stated to have completed their level of studies with provisions as follows :

- 1) Passed KTI/ Thesis
- 2) Cumulative Performance Index  $\geq 3.00$ ;
- 3) No There is E value ;
- 4) Number of credits with D grades are not more than 10% of total credits;

## L. THESIS

1. Final Project is referred to here is a Scientific Study form research results compiled by Alma Ata University students, either That Work Write Scientific (KTI) or Studies Case For D3 level students or thesis For Bachelor degree level students).
2. Before carry out preparation task end, students are required to make proposals or more proposals first then later seminar.
3. After the proposal is approved, students carry out research and its results arranged into KTI for D3 and thesis For undergraduate level.

4. Student allowed To prepare KTI/ Thesis Proposals If you have fulfilled a number of conditions :
  - a. Include KTI or Thesis in the current semester's KRS ;
  - b. Pass a minimum of 75% of minimum number of passing credits in each Study Program ;
  - c. The D value is a maximum of 10% of the total credits;
  - d. Pass the course Method Research / Methodology Research with minimum grade C.
  - e. Procedure preparation of proposals, seminars, awareness trials will be arranged separately .

#### **M. Exam Awareness**

Student permitted go through exam awareness after complete terms as following :

- 1) Include KTI or Thesis in the current semester's KRS ;
- 2) stated Free Theory (BT) by parts Academic . Student declared BT if :
  - a) Have done all eye college is a must take in accordance with applicable curriculum .
  - b) The maximum D value is 10% of the total credits
- 3) Register yourself in part Academic with includes 3 copies of KTI manuscript / thesis to Sec. Academics no later than 3 days before timetable exam held .
- 4) Has passed the LPBA and TOEFL attested with photocopy certificate
- 5) Have got agreement time exam from mentor proven with service note form
- 6) Procedure registration exam awareness will be arranged separately .

#### **N. FINAL JUDICIUM AND GRADUATION**

Judiciary is activity validating a student who has fulfilled all conditions to become Bachelor or Associate Expert and ratified with issuance of diplomas. Students attending judiciary are students who have fulfilled all obligations and requirements For set as Bachelor or Associate Expert. Student will be deemed to have passed the judiciary if has fulfilled the conditions as following :

- a. Have passed 100% of the total credits as specified each product with The maximum D value is 10% of the total credits
- b. IPK  $\geq 3,00$
- c. Passed Thesis / KTI
- d. Have earned Pass certificate for reading and writing the Qur'an and praying from LPBA
- e. Telah mendapatkan sertifikat TOEFL-Like Test dari ALTC dengan nilai  $\geq 400$  untuk D3 dan  $\geq 450$  untuk S1
- f. Free ASKEB's responsibility for PSIB students
- g. Pass the comprehensive exam /UHAP
- h. Judicial registration procedures will be determined separately

## O. Predicate Graduation

Students who are declared to have passed will receive predicate graduation as follows :

No	GPA	Predicate	Information
1	3.50 – 4.00	With Praise ( <i>Cum laude</i> )	Cum Laude predicate awarded to graduates who do not have a period of study No exceeds : <ul style="list-style-type: none"><li>• 4 years For undergraduate level</li><li>• 3 years For D3 level</li></ul>
2	3.00 – 3.49	Very satisfactory	
3	2.75 – 2.99	Satisfying	

## P. GRADUATION

The graduation ceremony is a ceremony giving the title expert intermediate or formal degrees and diploma . Graduates appointed as generally , all graduates wear a toga, too inauguration ceremony carried out by the Chairman Higher Education , Act. Chancellor, Chairman of the Education Foundation and Trustee of Alma Ata Higher Education. Graduation carried out 2 (two) times in a year, with adjusted time with academic calendar. Procedure implementation graduation arranged separately .

## Q. ACADEMIC CALENDAR

Calendar UAA academics are calendar that became reference in implementation activity Good academic and non-academic for the entire academic community within UAA during One academic year. Calendar academics are also handled for organizer administration education and teaching so that all over activity can be completed in accordance with the semester or annual cycle.

One year academic divided into 2 (two) semesters, namely Odd Semester and Even Semester. In the calendar academic among other things, regulated timetable activity academics which includes things like:

1. Admission Process New Student
2. Registration Period Student
3. PERMATA activities
4. Lectures
5. Midterm Exam (UTS)
6. Examination (UAS)
7. Graduation

Since issued Law no. 12 of 2012 concerning Higher Education, academic year starts in September and ends in September June . With thus activity The first academic semester lasts 5 (five) months from September arrives January , being 5 (five) months next , that is month February until with June taking place second semester academic activity, calendar can be read at each room lectures , laboratories and boards UAA announcement .

### Academic Year Calendar 2023/2024

No	Kegiatan	Mulai	Berakhir	Lama
<b>Semester Ganjil 2023/2024</b>				
1.	Her-Registrasi Mahasiswa	01 Agustus 2023	14 Agustus 2023	2 Minggu
2.	Kuliah Tahap I	11 September 2023	28 Oktober 2023	7 Minggu
3.	Ujian Tengah Semester	30 Oktober 2023	11 November 2023	2 Minggu
4.	<b>Yudisium Tahap I TA. 2023/2024</b>		<b>22 November 2023</b>	<b>1Hari (Selasa)</b>
5.	<b>Wisuda Tahap I TA. 2023/2024</b>		<b>21 Desember 2023</b>	<b>1 Hari (Rabu)</b>
6.	Kuliah Tahap II	13 November 2023	06 Januari 2024	8 Minggu
7.	Ujian Akhir Semester	08 Januari 2024	20 Januari 2024	2 Minggu
8.	Evaluasi Pembelajaran Semester	08 Februari 2024	09 Februari 2024	2 Hari
9.	<b>Yudisium Tahap II TA. 2023/2024</b>		<b>21 Februari 2024</b>	<b>1Hari (Rabu)</b>
10.	<b>Wisuda Tahap II TA. 2023/2024</b>		<b>20 Maret 2024</b>	<b>1Hari (Rabu)</b>
<b>Semester Genap 2023/2024</b>				
11.	Her-Registrasi Mahasiswa	01 Februari 2024	14 Februari 2024	2 Minggu
12.	Kuliah tahap I	19 Februari 2024	27 April 2024	7 Minggu
13.	Ujian Tengah Semester	29 April 2024	11 Mei 2024	2 Minggu
14.	Kuliah Tahap II	13 Mei 2024	06 Juli 2024	8 Minggu
15.	Libur Idul Fitri 1445 H	01 April 2024	19 April 2024	3 Minggu
16.	Ujian Akhir Semester	08 Juli 2024	20 Juli 2024	2 Minggu
17.	<b>Yudisium Tahap III TA. 2023/2024</b>		<b>24 Juli 2024</b>	<b>1Hari (Senin)</b>
18.	<b>Wisuda Tahap III TA. 2023/2024</b>		<b>21 Agustus 2024</b>	<b>1Hari (Rabu)</b>
19.	Evaluasi Pembelajaran Semester	14 Agustus 2024	15 Agustus 2024	2 hari

## CHAPTER V STUDENT AND ALUMNI AFFAIRS

### A. STUDENT AFFAIRS

#### 1. Pattern and Direction of Student Development

Life student affairs as part of the national education system needs to be fostered and developed, one of them with the existence of an Activity Unit Students (UKM). SMEs are activity units supportive and complementary education activity curricular in the frame of achieving objective higher education and constituting effort development. The potential that exists in students includes Power reasoning, interests, talents, activities devotion society, as well as other efforts to increase student quality.

Direction coaching and development student affairs is educating students to be able to increase Power reasoning, mastering knowledge and technology as well as having soul dedication and creation devout man to Allah SWT, be virtuous character noble, personable, disciplined, working hard, tough, smart and skilled, healthy physically and spiritually, as well as having a great sense of responsibility towards the future society, nation and state.

#### 2. Organization Student Affairs

Organization student affairs college tall is rides and facilities development self student to direction expansion insight and improvement scholarship as well as integration personality . To reach matter the required an activity format extracurriculars which include development and power reasoning, interests, talents, as well as improving the quality of student personality in a comprehensive way. Organization Student Affairs at UAA includes:

##### a. Student Executive Board

The Executive Board of Alma Ata Students is formed with the objective of channeling student interest, talent and initiative in various activities / Activity Units Students (UKM). BEM Alma Ata is also a member of bridge aspirational students to UAA, vehicle development science students, and rides distribution aspirational and unifying students.

BEM management is selected in a democratic way by students, from students and for students with a service period of 1 (one) year, with a structure consisting of organizations from Chairman, Deputy Chairman, Secretary and Treasurer General. BEM Alma Ata is in charge of a number of fields, namely:

- 1) Field Intellectual Development
- 2) Field Development Resource Man
- 3) Field Talents and Interests
- 4) Field Islamic Spirituality
- 5) Field Entrepreneurship
- 6) Field Community Development and Service.

**b. Set Student Major:**

Set Students at Alma Ata University Yogyakarta are organization students at the Alma Ata Yogyakarta University Study Program level which is a medium for its members To develop thinking patterns and personality are related to discipline knowledge to be ready to plunge into the public.

Set Alma Ata University students have arrangement administrator from study program students related as well as stage reorganization every 1 year academic . Alma Ata University has a number of set students in each study program including :

**1) Set Student Faculty of Islamic Religion (HIMAFAI)**

HIMAFAI is receptacle activity student For FAI Alma Ata University students who are under BEM. Manager organization chosen from and by students Islamic Religious Studies for a term of 1 (one) year.

**2) Student Nurse Set (HIMIKA)**

Represents something receptacle activity student For Science Study Program students Nursing is under BEM . Manager organization chosen from and by students Knowledge Nursing for a term of office of 1 (one) year.

By general Himika aims to increase source power, well-being and participation active student nursing in development of religion, nation and state towards life an intellectual, just and prosperous society, but in a special way also has the objective that is form nursing students become professional nurses through coaching in organizational student affairs at Alma Ata University.

HIMIKA has a number of routine activities carried out on each management period, including: Meetings Work, Friendship Evening (makrab), National Seminar, Community Social Service, Workshop, etc. HIMIKA has also expanded its wings to the national level by following the management of the Association of Indonesian Student Nurses (ILMIKI) as well as following a number of activities at the National level such as Meet National Science and National Working Meeting.

**3) Student Nutrition Set (HIMAGI)**

HIMAGI is something receptacle activity student For Science Study Program students Nutrition which is under BEM . Manager organization chosen from and by students Knowledge Nutrition for a term of office of 1 (one) year.

HIMAGI has the vision "With Spirit togetherness making HIMAGI as receptacle development self student major nutrition so that created an active, creative, superior, professional organization in the field of science and technology with hold on stick to values Islamic teachings serve For the interest of people".

Meanwhile, to achieve the vision, HIMAGI has prepared a number of missions including:

- a) Build a conducive organization atmosphere through effective communication, and strengthening a sense of solidarity kinship in an effort to make the organization's program a success;
- b) Facilitate development yourself in the field of science profession nutrition nor interest and talent for each member organization with hold on stick to values Islamic teachings serve For interest people.

HIMAGI has staged a number of innovative activity routines so that it attracts student interest. To follow, enliven the event and bring benefits to students and the academic community. A number of activities are: Comparative Study to the University of Indonesia, Visit Industry to Nestle, Warning day National nutrition, as well as has formed the " *English Club* " as receptacle for students to get it Study active language English.

#### 4) **Student Midwife Set (HIMABI)**

HIMABI accommodates student midwifery , its existence is under BEM. Manager organization chosen from and by DIII midwifery students for term of office One year . By HIMABI's general aims increase source power, well-being and participation student midwifery in development of religion, nation and state towards life an intellectual, just and prosperous society and special aim form student midwifery become professional midwife through coaching in organization Alma Ata University student affairs . Through the activity, HIMABI participated involved in development of the D III Midwifery Study Program Good in form devotion society, introduction study program to prospective new students and new students, organizing seminars and development student's self (soft skills).

HIMABI Alma Ata University is formed since 2010. Forms HIMABI activities that have been held are maintenance activities : seminars; devotion society, introduction study program for new students and prospective new

students as well as students' self development (example; *outbound activities* and *inspiring others* at PERMATA)

**5. Student Pharmacy Set (HIMAFa)**

HIMAFa is an organization students who shelter , facilitate , accommodate aspirations , as well as event For strengthen friendship and information regarding the world of pharmacy . Himafa stands along with its founding study program at Alma Ata University Pharmacy. Although he's still an old young man, HIMAFa has carried out one social activity, namely Fundraising with the theme "ALMA ATA CHARITY TO BIMA"

Devotion social This is activity from Department HIMAFa Community Service (depenmas) was held on 30 December 2016 and 3.4 January 2017 at the Alma Ata University Dictionary, Yogyakarta. On the basis of HIMAFa humanity helps brothers and sisters who are in Bima, West Nusa Tenggara for A little lighten up the burden by donating Donation from results fundraising in the environment campus of Alma Ata University, Yogyakarta. Activity This form of internal fundraising environment campus of Alma Ata University Yogyakarta which was carried out during not quite more than two days to the entire academic community of Alma Ata University. Activity This was carried out by the Association Student Pharmacy (HIMAFa) Alma Ata University Yogyakarta with the method of giving help in nominal form for flood victims in BIMA West Nusa Tenggara. Activity This has been completed well and smoothly, proven with on December 30 2016 and January 3 2017 HIMAFa carried out fundraising within the academic community at Alma Ata University, and then on January 4 as well but interspersed with fundraising to lecturers and staff on campus .

**c. Student Activity Unit**

Activity Unit Students (UKM) is a unit under the Executive Board Functioning Student (BEM). For channel interest, talent and initiative students There are Some of the UKM held at Alma Ata College include:

SMEs	ACTIVITY	PERFORMANCE
DANCE	Activity Unit Students in the field dance art (ratoh dance Duek from Aceh province, modified dance). this SME started active in 2013 and has successfully organized a number of ballet shows . Activities performed	



	covers <i>Dance Mapping "All about Indonesian culture"</i> (Providing Information to students about dance culture in Indonesia), as filler several major Alma Ata University events such as Seminars, Scientific Orations, National Level Futsal Competition, Alma Ata University, Pesona Series of Ta'aruf Period (Jewels), Said Promise Pre Clinic , etc	
THEATER	Activity units students in the field art roles, activities: filler several Alma Ata University events such as: Permata, Release Night Graduation, holding race poetry University level as well stage show theater together Other Universities	
TAMBOURINE	Hadrah Alma Ata is one of the activity students (UKM) of Alma Ata University who are on the move in the field of art. this unit active follow activity performances , both within Alma Ata University and outside , both in nature entertainment and nature championship . Activities regularly carried out: exercise routine every 2x in a week , performer of Islamic Studies Rahmatan Lil 'Alamin (KIRA), Pengajian Friday Legi, Hold Race National Level Hadroh, National Santri Day Carnival	
VOLLEYBALL	SME Volleyball was formed because many students were interested in volleyball sport. This SME often held inter-university sparring and participated in a number of competitions. Activity regularly carried out : exercise routine twice a week, holding sparring between universities	
SCOUT	For grow Love homeland to students so Scout UKM was formed This . A number of routine activities carried out by this SME is stage education build unit for member scouting, Hiking to cultivate a sense of love for the environment, holding race cross nature, devotion Social, even until follow love parade competition homeland.	
PADUS	PSM Alma Ata later given The name PSM "Amazing Grace" is the Activity Unit Students in the field pull voice . Amazing Grace does a lot of performance inside campus or outside campus . PSM activities inside campus routine done every year is as performer at a speaking event promised Pre Clinic, Pre Nursing Study Program Nurses, Alma Ata graduation ceremony, opening of PERMATA, Scientific oration, national seminars, and others. PSM Alma Ata activities are carried out outside	3rd Place in the Mars KB and Regional Song Competition Province 2016

	campus is participation race alloy votes organized by IBI and BKKBN Yogyakarta Special Region Province.	
FUTSAL	<p>UKM Futsal is an activity unit of students in the field sports, especially futsal ball. this SME owns a number of a strong and solid team that is ready submitted For follow a number of tournament . The UKM futsal team was given the name "Alma Ata Futsal Academy" is trained by coaches who are reliable and competent in their field as well as having follow training ASEAN level Futsal coaches. Activities carried out by AFA include: exercise routine 2-3x in a week , following a number of races Good level provincial or national , held inter - university futsal tournament national</p>	<p>1. First Place in the Futsal Tournament Frame International Nursing Day 2014, First Place in Futsal Tournament Frame International Nursing Day 2015, Second Place in Futsal Tournament Frame International Nursing Day 2016, Second Place in the 2016 National "Pharmacy Cup" Futsal Tournament</p>
PIKM	<p>PIK-M Friends Teenager Alma Ata is center information and counseling students (PIK-M), namely purposeful activities give counseling, information, training For development of students' abilities in doing service counseling, mentoring and giving information about health reproduction to teenagers in the DIY areas.</p> <p>PIK-M Alma Ata University was founded on March 23 2009 by the leadership of Alma Ata and inaugurated by the Chair of the Central</p>	<p>Friendship Ambassador GenRe BKKBN 2015, Student Ambassador Finalist GenRe 2016 and 2017</p>

	<p>BKKBN, dr. Sugiri Syarief, M.PH. This PIK-M activity unit Keep going experience very rapid development and growth . In the year of fourth, PIK-M already obtained the status “Tough”, after previously consecutively attaining the status “Growing”, and then “Establishing”. Activities that have been carried out by PIK-M include: do service counseling, consulting and mentoring students several high schools in the DIY area about health reproduction teenager.</p> <p>PIK-M arrived today This in a way continuous do devotion public form trainings health such as “BSE Training or Inspection Breast Alone” share mothers and teenage princesses in several areas in DIY. And also in a way continuously do service counseling, mentoring and providing information about health reproduction in the environment Alma Ata University student with stage meeting routine every Thursday afternoon at 16.00 -18.00 WIB</p> <p>Activities that are routine and have been done: PMR Development at SMAN 2 Yogyakarta City, Counseling and Community Service Social at SLB Bangun Putra Kasihan, Counseling at the Home Social Development for Youth in Sleman Yogyakarta, Community Service with Bantul Health Office, Student Ambassador Development GenRe (Generation Planning) Alma Ata University</p>	
BANDS	<p>UKM Band was founded simultaneously with Dance and Theater UKM. this SME was formed on the basis of high student interest about the world of art sounds and musical tools. Alma Ata University UKM Band was awarded the name "Alfath Band". has filled in a number of University activities , holding Performing Arts Competition University level as well as Stage training to students about music</p>	
MARTIAL ARTS	<p>this unit as vehicle for student For practice martial arts abilities on branches sport Martial arts. A number of students active in activity defend themselves This . The activities carried out is exercise Routinely 2 x a week both within the University and together with other universities, held race pencak martial arts university level, filling several events at Alma Ata University</p>	<p>Second place in Pomda Pencak Silat Sleman Regency 2014</p>

Film	this unit as receptacle for students who have interest in the field of photography and film. A number of joining students in SMEs This in a way routine stage meeting as well as has followed in activities grew up at Alma Ata University for document activity the . This SME also has achieved achievements of the Indonesian Student Film Festival held by the Ministry of Research, Technology and Higher Education 2017 as Champion of Hope III with the film he produced entitled 'Karno"	
Journalism	this unit as receptacle for students who have interest and talent in the field of spreading information, government and mass media. A number of active students combined in this SME have followed training journalism and so on routine stage meetings .	
Badminton	This badminton UKM new founded in 2017 base love students will field badminton sport. this SME routine stage exercise outside timetable lectures .	

One of the activities of this unit is a recitation routine called Rahmatan Islamic Studies lil' Alamin (KIRA). This study has quite a significant role in embedding Islamic principles in student life. KIRA activities held every day Friday with performers from Kiai and Ulama around DIY who can afford it equip students with comprehensive understanding of religion . Besides that this unit also holds recitations at the Islamic commemoration day, Ramadhan Special Program activities (PKR, etc.)

## B. SCHOLARSHIP

Offer incoming scholarships to Alma Ata University are quite numerous and varied.

The scholarship includes :

### 1) Alma Ata Foundation Scholarship

- **For Foundation Scholarship New Students**

Form scholarships offered include :

- **Scholarship (Excellent Unable)**

This scholarship is given to candidate Alma Ata students who excel but are not capable in an economic way with magnitude scholarships 25-100% of all cost education (sodaqoh Jariyah, Fixed SPP, and Variable SPP) and applies during the normal study period (6 semesters for diploma and 8 semesters for bachelor).

- **Non-Academic Achievement Scholarship**

Non-academic achievements scholarships are awarded to candidate Alma Ata students who excel non-academically but are not capable in a way economy.

Non-academic scholarships given by Alma Ata in the frame provide help with education costs for candidate students who excel in non-academic fields and have *himmah* (high study spirit) to continue study at the University but are not capable in an economic way. Scholarship amount amounting to 25-50% of education costs consists of fixed SPP and variable SPP .

- **For Foundation Scholarship Regular Students**

- **Academic Performance Scholarship**

- Scholarship performance earmarked for all over students who have IPS 3.75; entitled get help education amounting to Rp. 100,000.00/ month = Rp. 600,000 for one semester.

- **Non-Academic Achievement Scholarship**

- Scholarship non-academic achievements are scholarships awarded to Alma Ata students who obtained non-academic achievements or obtain Champion race in scientific fields, artistic sports, arts alloy sound, etc.

## 2) Government Scholarships

### a) DIKTI Scholarship Via Kopertis Region V DIY

Scholarship from Department of Higher Education (DIKTI) through Kopertis Region V DIY, including :

- a) Scholarship Help Study Students (BBBM)
- b) Academic Performance Enhancement Scholarship (BPPA)
- c) Scholarship Help Special Students (BBKM)
- d) Scholarship form help education cost amounting to Rp. 4,200,000/ year / student .

### b) Student Scholarship from DIKPORA

Student scholarships from the Yogyakarta Provincial Education, Youth and Sports Department for students who have a DIY KTP are offered every year. Scholarship the divided into 2 types scholarship for new students and share regular students. Scholarship form help education cost amounting to Rp. 2,000,000/ year / students and assistance MABA registration is IDR. 7,500,000/ year / student .

## 3) Bidikmisi Scholarship

This scholarship is given to candidate Alma Ata students who excel but are not capable in a way economy with magnitude 100% scholarship from all cost education (sodaqoh Jariah, Fixed SPP, and Variable SPP) and applies during the normal study period (6 semesters for diploma and 8 semesters for bachelor).

All scholarship offers are socialized and coordinated by the Director Field Student Affairs to students

### C. CDC

Alma Ata University *Career Development Center* or abbreviated as CDC is one of the divisions below Directorate Alma Ata University Student Affairs . One of the roles of a University is producing Professional, upstanding graduates tall mark scientific and advanced rule scientific as the basis of every charity His actions are morally noble, and hold on steadfast in serving the teachings of the Islamic religion For the interest of people so that the graduates can absorb in the world of work and is not quite enough answer institution To be able to produce graduates of like mentioned above. Alma Ata University CDC is expected to become a medium to align graduates of with the world of work. The function of Alma Ata University CDC is as center Training related Study Program Core Competencies, center Training related Competence general additional, center tracer study implementer, center management activity internship and center information vacancy work.

#### Activity Form

1. *Campus Hiring* : is a recruitment service that brings together direct party industry with graduates on campus
2. *Job Fair* : is a service recruitment exhibition form that can open opportunities for companies in recruitment of competent human resources
3. *Candidate Search* : is a recruitment service that provides graduates of the best in accordance with the expected needs of the world of work
4. *Soft skills and entrepreneur skills* training programs and seminars in a continuous way (starting from semester IV to semester VIII) which is stated to in something curriculum .
5. *Career Seminar* : is activity held as preparation equip candidate graduates For facing the world of work. In the career seminar activities This given a number of material about motivation entrepreneurship, training makes a good CV and Application Letter as well as face interview Work.

Alma Ata University CDC routine has organized activity alumni provision in the form of a Career Development Seminar before they graduate as well as do Tracer study activities at the study program level.

#### **D. ALMA ATA ALUMNI**

To look after brotherhood between graduates and Alma Ata, then need to do continuous development in something receptacle Alma Ata Alumni Family . Alumni development is directed To give an active role for alumni in developing their alma mater, interweaving cooperation between alumni and each other help provide information about job opportunities, as well as fertilize alumni unity and unity to donate themselves as human professional academics in the middle public. UAA Alumni Family formed with objective For :

1. Fostering and strengthening the sense of alumni family
2. Help increase the role of his alma mater in implementation of the Tri Dharma of Higher Education
3. Implement and maintain connection cooperation with inside organization or outside UAA
4. Operate business and actively give help to achieve the objectives of the alma mater and for progress as well as the well-being of alumni
5. Encourage alumni to develop as well as apply skills and profession for the interests of society, religion, nation, state and their alma mater.

## CHAPTER VI CAMPUS ORDERS FOR CAMPUS LIFE

Smoothness and order organizing the learning process teaching at UAA is necessary held with instill the stated organizational culture in Ethics and Rules within the UAA environment .

### A. STUDENT RIGHTS AND OBLIGATIONS

#### 1. Right student includes :

- a. Use academic freedom in a responsible way For demanding and studying knowledge in accordance with norms and morals that apply at UAA and the Alma Ata Foundation
- b. Acquire teaching with the best and service academic fields in accordance with interests, talents his hobbies and abilities.
- c. Utilize facilities at UAA in frame smooth learning process .
- d. Get guidance from responsible lecturer on the study program / major being followed in completion of his education
- e. Acquire service related information with the study program / major being followed as well as the results of studying it
- f. Finish studies more beginning from set schedule in accordance with applicable regulations / requirements
- g. Utilize source UAA power through representative / organization student affairs which manages and regulates interests and way of social life

#### 2. Student Obligations includes :

- a. Obey all rules and regulations that apply to UAA and the Alma Ata Foundation, including those listed in the *Informed Consent form* (Appendix 4).
- b. Honor power educator and or power administrative environment at Alma Ata University and the Alma Ata Foundation
- c. Follow look after facilities and infrastructure as well as cleanliness, order and security UAA campus and other campuses within the Alma Ata Foundation
- d. Value knowledge knowledge, technology and or art
- e. Uphold tall national culture
- f. Guard authority and name both UAA and the Alma Ata Foundation

### B. PENALTY

#### 1. Sanctions given to students can be in the form of:

- a. Oral reprimand
- b. Reprimand written
- c. Warning hard
- d. Delay in awarding a diploma
- e. Academic mark cancellation
- f. Prohibition follow studying in a certain period of time
- g. Revocation rights as student





# Universitas Alma Ata

The Globe Inspiring University

## **Academic Guideline**

Faculty of Tarbiyah and Teacher Training  
Alma Ata University  
2023

